



ExBoot User Guide

Copyright © 2005 AXIOMTEK CO., LTD. All Rights Reserved.

Windows is a registered trademark of Microsoft Corporation.
All other brand and product names are trademarks or registered
trademarks of their respective owners.

For more product information, please visit www.exboot.com.

Contents

ExBoot

INTRODUCTION	3
SPECIAL BENEFITS OF THE EXBOOT	4
EXBOOT CONSOLE	5
BEFORE GETTING STARTED	6
SYSTEM REQUIREMENTS	6
REMOVE THE USB HARD DISK FROM YOUR PC	7
BACK UP A DRIVE	8
RESCAN DISKS.....	16
RESTORE A DRIVE	16
RESTORE INDIVIDUAL FILES AND DIRECTORIES	21
POINT-IN-TIME RECOVERY.....	22
ONE-TOUCH BUTTON BACKUP	27
TROUBLESHOOTING	29

ExBoot

Introduction

Until now, external USB hard drives were *just* solutions for adding extra disk storage or for archiving files. However, if your computer's hard drive failed, it was impossible to access the files stored on your external drive. Until now...

ExBoot maximizes your system availability by allowing you to back up your computer's hard drive to a *bootable* external USB hard drive.

Because this external USB drive is now bootable, it can dramatically shorten your recovery time after a computer or notebook hard drive failure.

Upon hard drive failure, instead of needing to install the operating system and all of your applications on a replacement hard drive, you can now rapidly boot your system from the external USB drive and restore the entire drive to the new hard drive.

In addition, ExBoot provides protection against damage to files on your hard drive caused by virus infection or hacker attack. Using Windows Explorer, you can access the external USB drive to restore individual data files or directories as needed.

ExBoot consists a full product line suitable for 3.5-inch (EXB-0131), 2.5-inch (EXB-0121), and 1.8-inch (EXB-0111) IDE hard disc drive. Therefore, all conventional PC devices, sever, workstation, desktop PC, Notebook, can work with ExBoot.

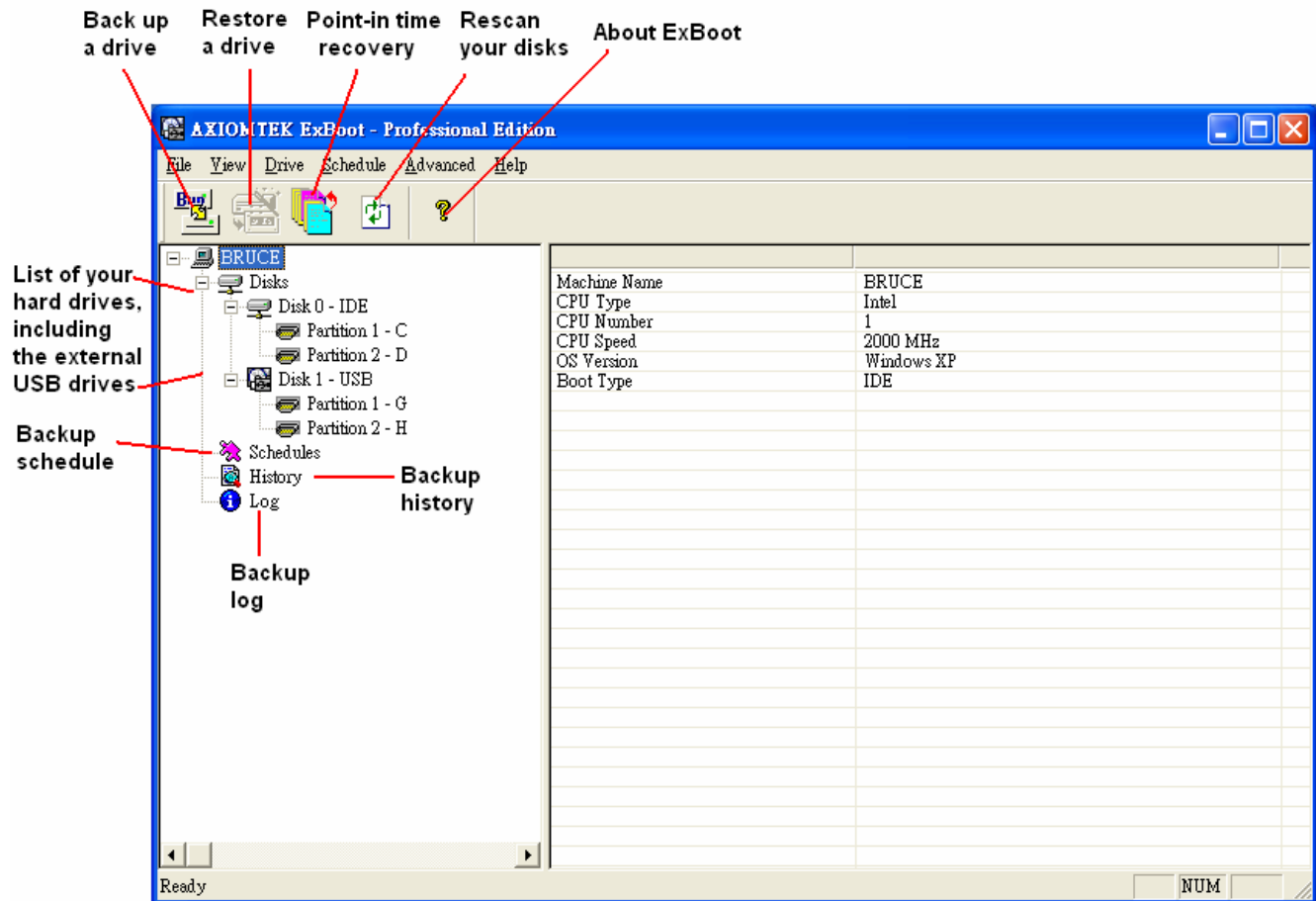


Special Benefits of the ExBoot

- ◆ **Minimal Downtime:** In just a few simple steps, and without the time-consuming installation and configuration of the operating system, you can always boot directly from the external ExBoot USB Drive, and promptly get back to work.
- ◆ **Backup Verification:** Unlike other backup software, which require a great deal of effort in order to verify, you can now do so by booting from the ExBoot USB Drive.
- ◆ **Compatibility Test:** Whenever an upgrade or a service pack for the operating system or application software is needed, the EXB-0131 allows for execution of these programs on the ExBoot USB Drive itself. Once successful, you can easily transfer your system.

ExBoot Console

ExBoot features an easy-to-use console.



Before Getting Started

Please read the following information before starting using ExBoot and perform backup and recovery.

1. Please use the USB cable and the hard disk case included in the package for the optimal performance.
2. Please operate the ExBoot carefully to avoid damage of the hard drive. When you move the hard disk or when the hard disk is not in use, please locate the hard disk in the secured position. If your ExBoot is EXB-0131, we recommend that you always use the hard disk case with the vertical stand and make sure that the case is always in the firm and stable status.
3. Please connect the USB cable to the high-voltage USB port on your PC or notebook. If any difficulty occurs, try to connect to the other USB port. Please always make sure using the same USB slot the first time you installed in your PC or laptop, and do not connect ExBoot to any USB Hub.
4. When connecting to a notebook equipped with USB 2.0 PCMCIA slot, make sure that you provide the sufficient power voltage for the ExBoot hard drive enclosure.

System Requirements

Before you start installing the ExBoot software, please make sure you meet the following requirements.

1. 200MHz Intel Pentium Processor
2. 64MB RAM
3. CD-ROM or DVD-ROM used to read the ExBoot Installation CD-ROM
4. USB 2.0 slot, if your ExBoot is EXB-0121, you need 2 USB slots
5. BIOS that supports **Boot up from USB device** and make sure it has been configured as the first option of the boot up sequence.
6. Supported operating systems including Windows XP Home SP1, Windows XP Professional SP1, Windows 2000 Professional SP4, Windows 2000 Server SP4, Windows 2000 Advance Server, Windows 2003 Server, and Windows 2003 Enterprise Server.

Remove the USB Hard Disk from your PC

Please follow the procedure below to unplug the USB Hard Disk from your PC.

1. Click on Safely Remove Hardware icon in the system toolbar.
2. Click on the USB Mass Storage Device icon to remove.
3. If your ExBoot is EXB-0131, power off the EXB-0131 USB hard disk
4. Unplug the USB cable.

Back up a Drive


When you perform a backup, ExBoot copies files from your hard drive to your external USB drive.

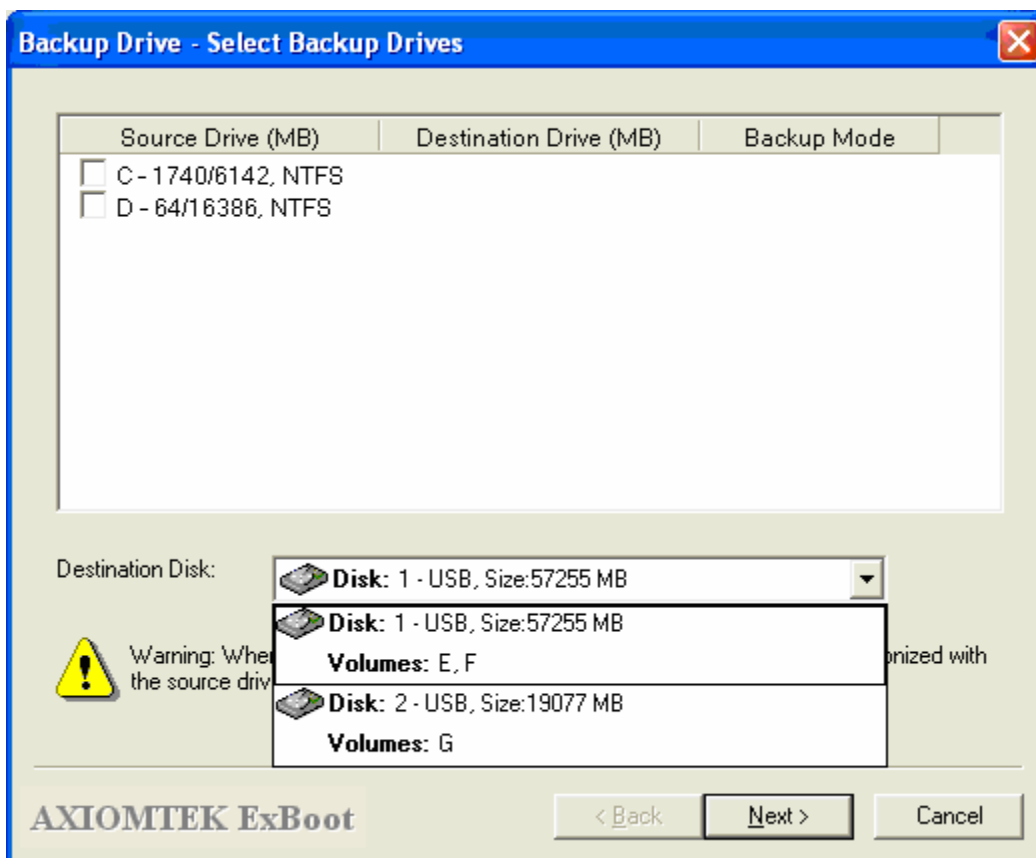
When you perform a *full backup*, your entire hard drive is copied to your external USB drive. With ExBoot's built-in synchronization feature, after the backup is complete, you will have the same files on your hard drive and your external drive. To ensure that the two drives are identical, if you had previously run another full backup, any files that no longer exist on your hard drive will be deleted from external drive.

When you perform an *incremental backup*, only files changed since the last backup are backed up. Because only changed files are backed up, incremental backups are generally faster than full backups. In addition, incremental backups enable you to maintain multiple copies of files on your external USB drive. This is useful if you need to restore an older version of a file, rather than the last backed up version. Incremental backups require a full backup as a foundation before the incremental method can be used.

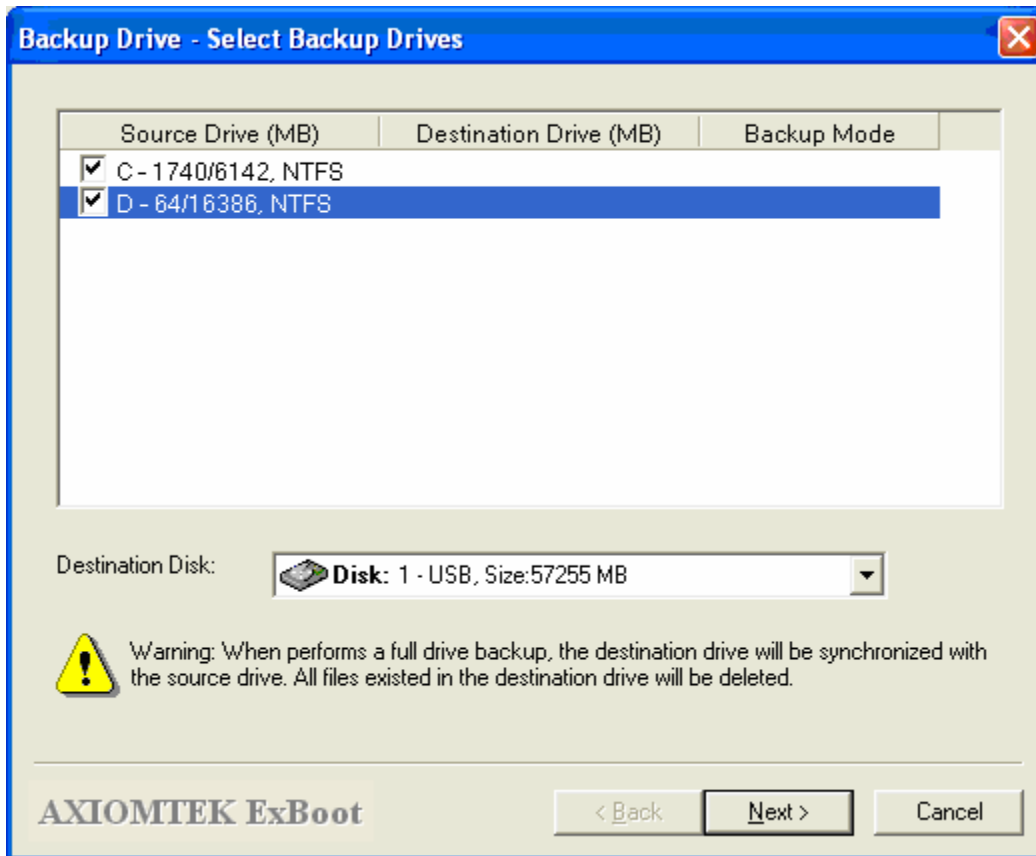
To back up your hard drive:



1. Click the *Back up Drive* button ().
2. Select the external USB drive that is the destination for the backup.



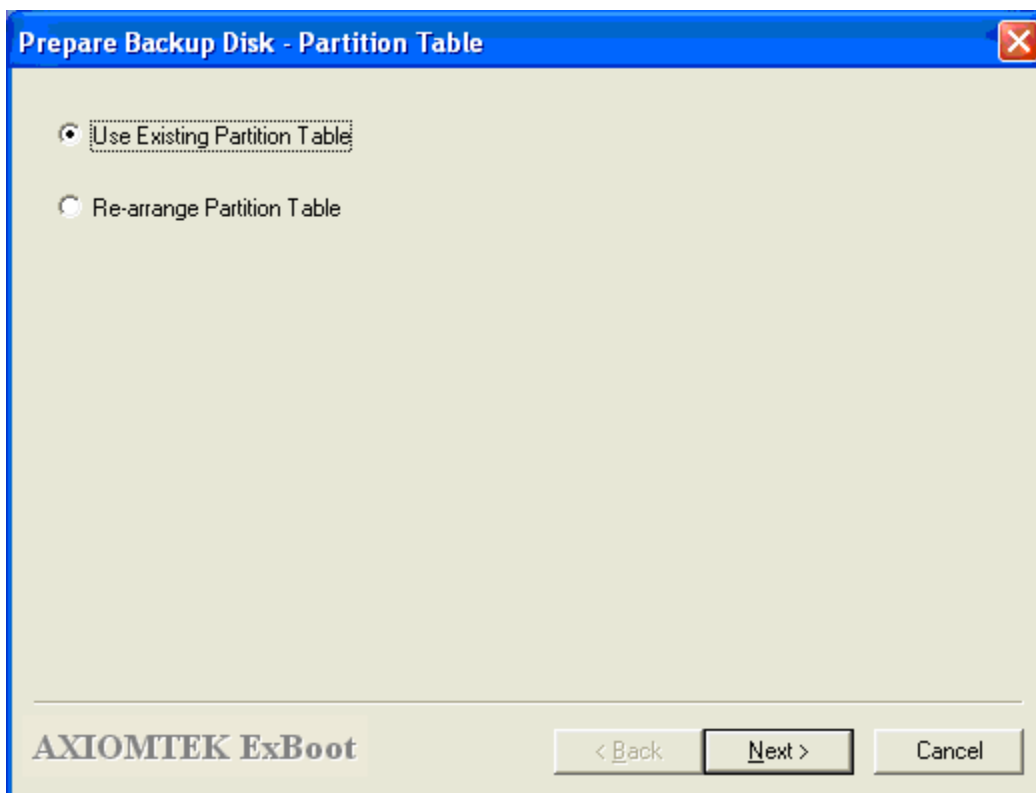
3. Select the source drive(s) that you want to back up.



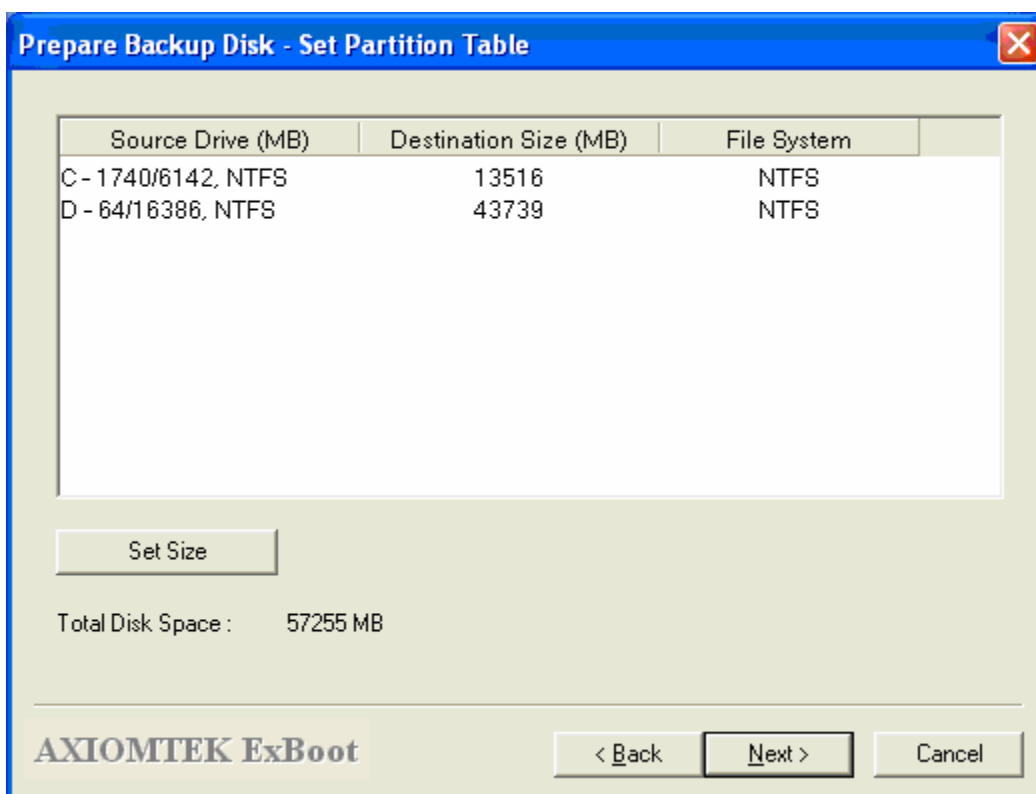
Click *Next* button to continue. If this is the first time that the drive has been used for backup, you will be led through a wizard to prepare it for backup.

4. (First time drive use) Select how the external USB drive should be partitioned.

ExBoot needs more partitions if you choose to back up more than one disk. In most cases, you should select *Re-arrange Partition Table* so that the appropriate partitions can be created for you.

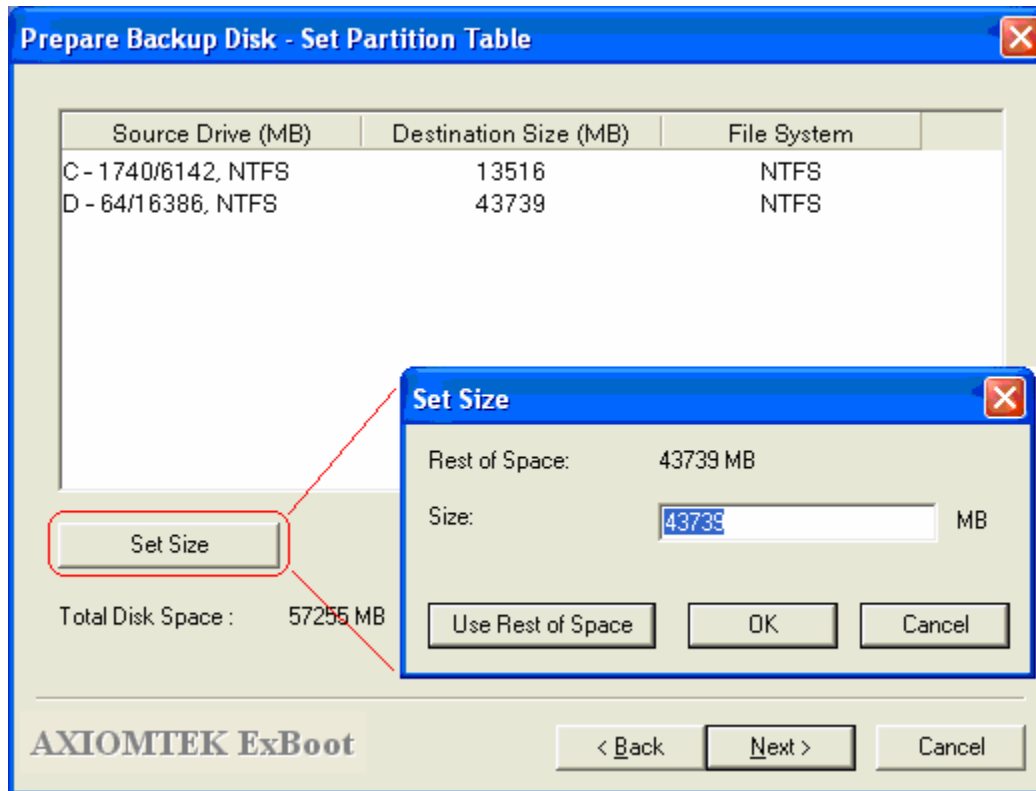


5. (First time drive use) If you chose to re-arrange the partition table, specify the size and format type for your partition(s).

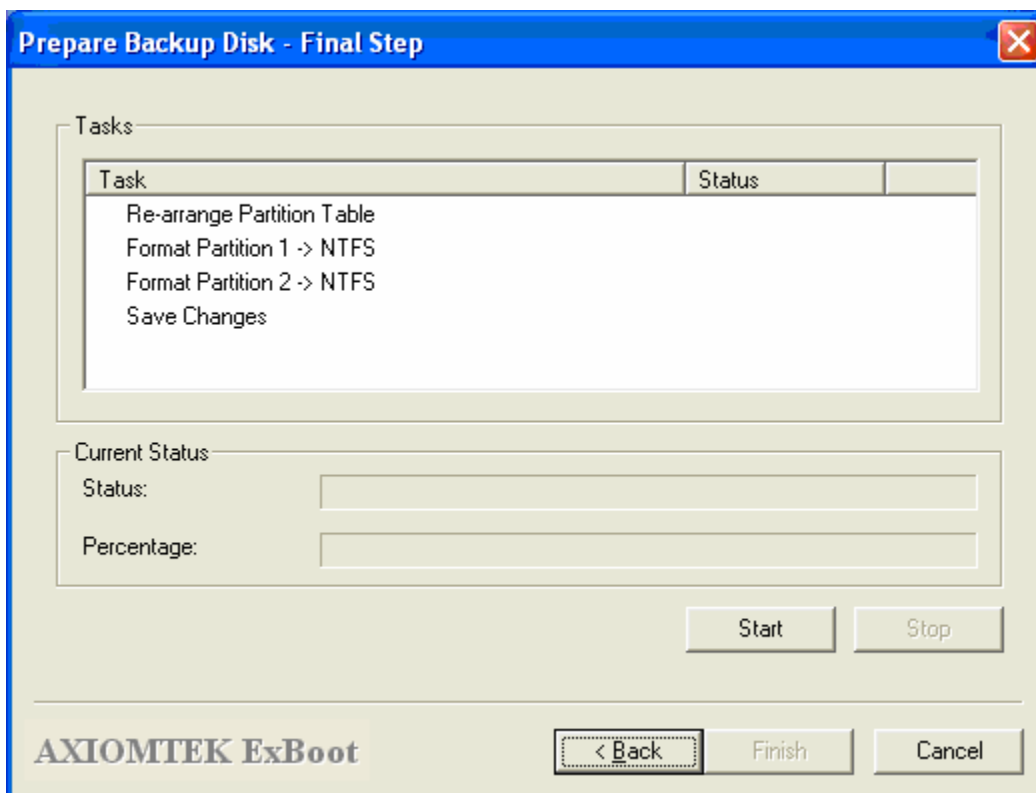


By default, the size of the first partition will be larger than the full size of your drives. You can reduce this number if you are not using the full disk, but be sure to allow for expansion.

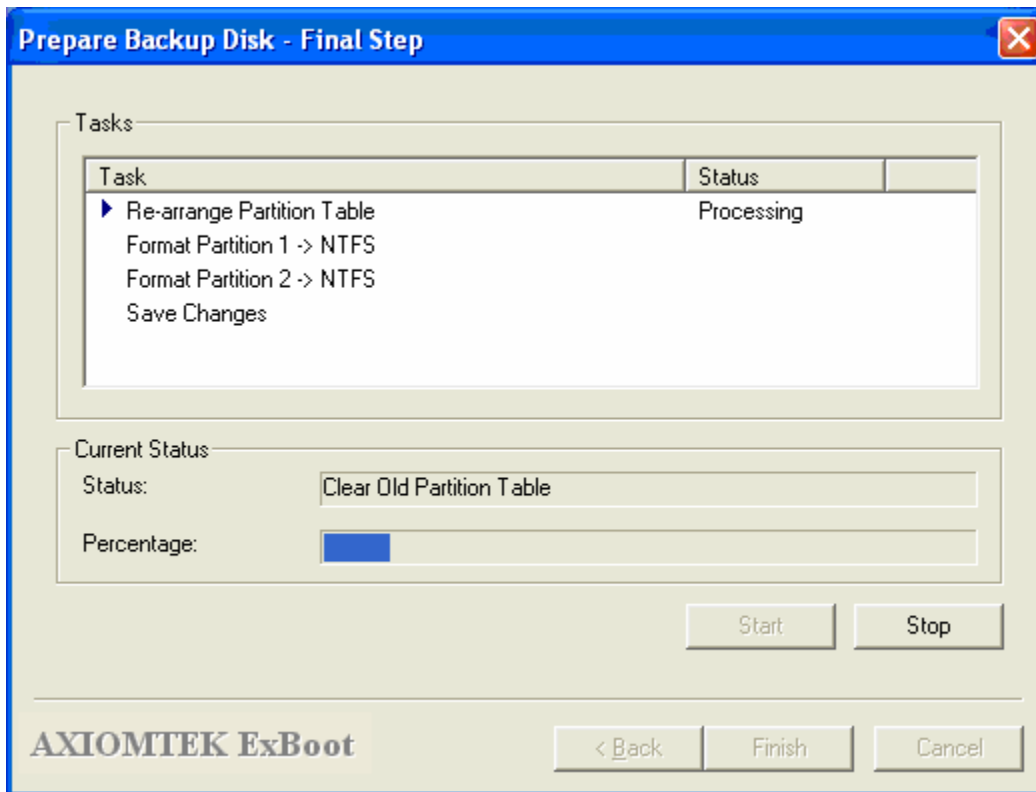
If you will be performing incremental backups, click *Set Size* button to allocate a set amount of space more than the original partition's or leave the wizard to set an adequate disk size for each partition.



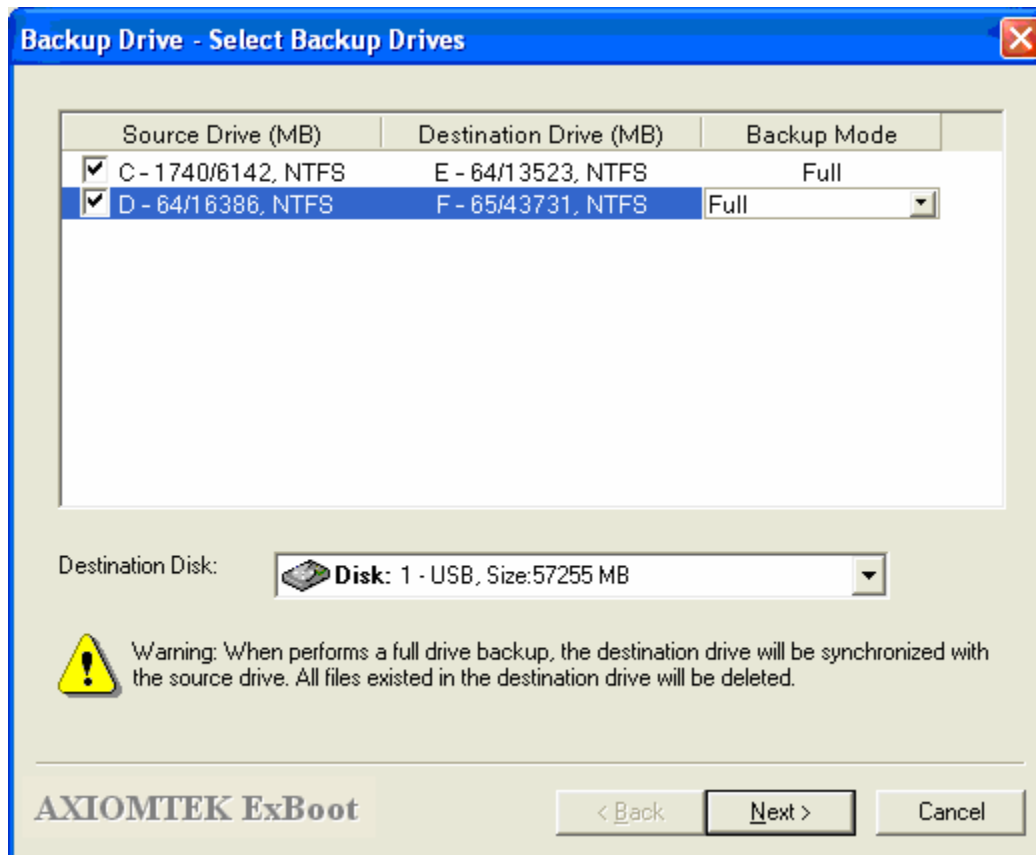
6. (First time drive use) Click *Start* button to begin preparing your disk.



You can watch the progress of the preparation on the screen.



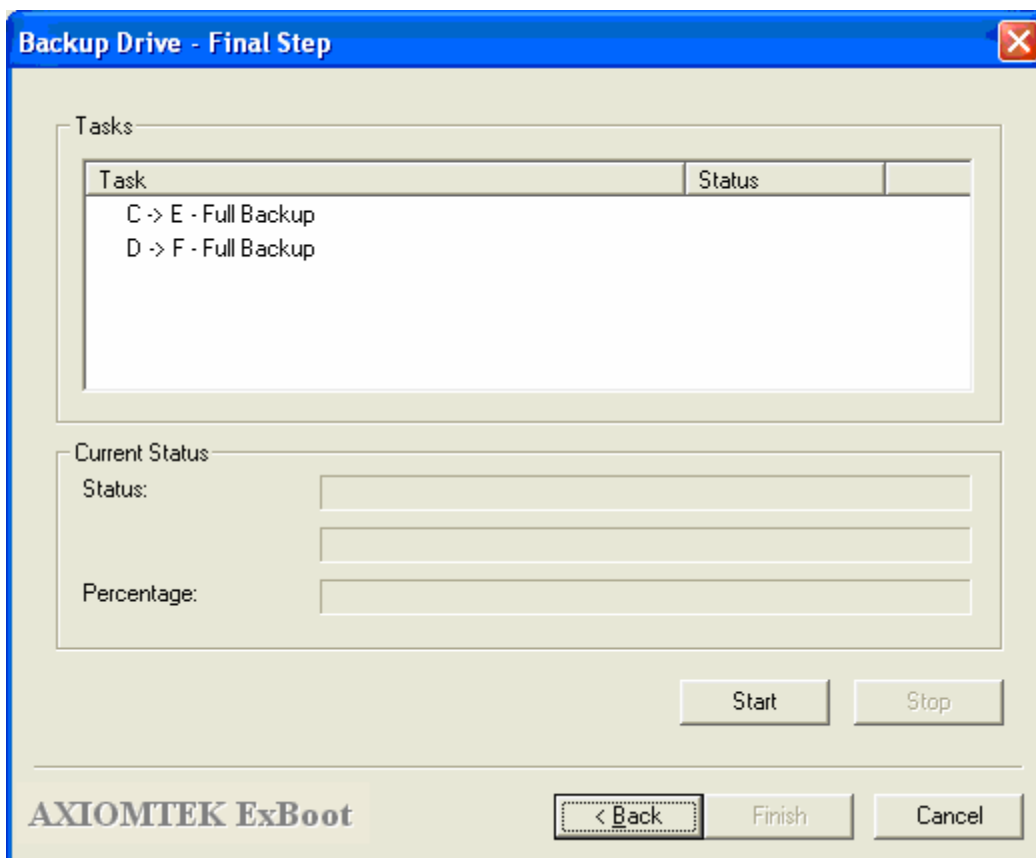
7. Select whether this backup should be a full backup or an incremental backup



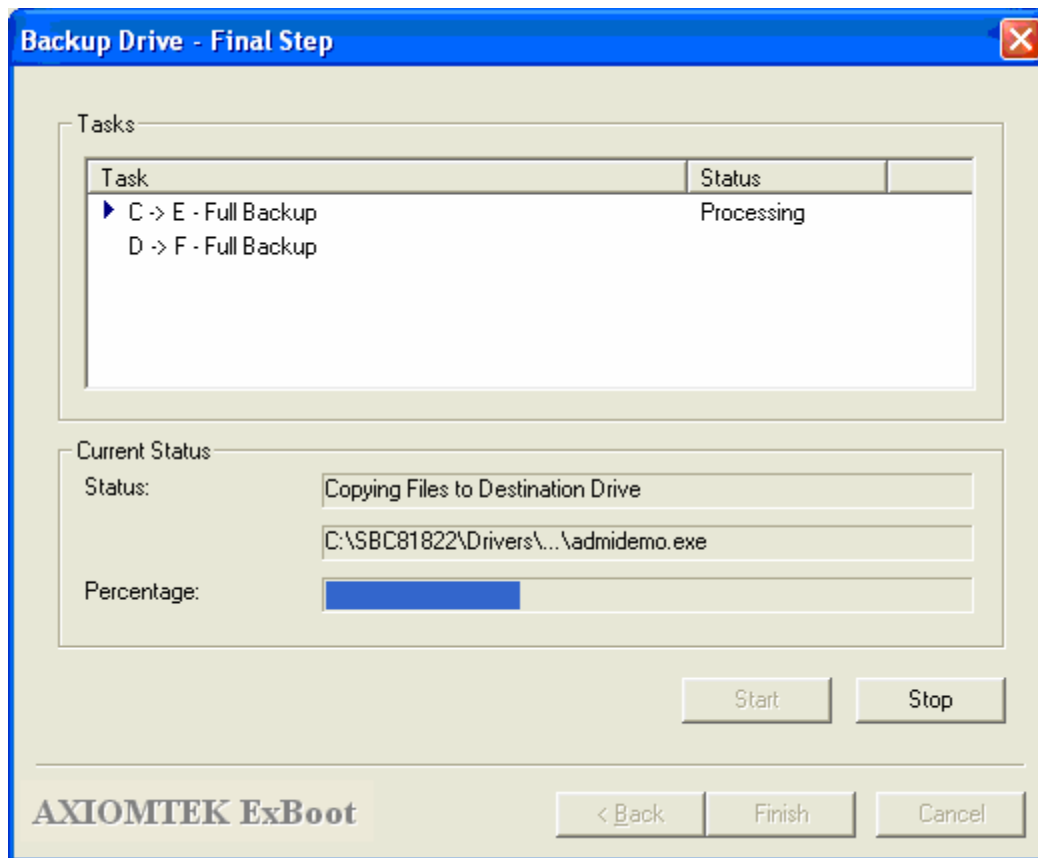
If this is your first backup, you can only select *Full Backup*.

During an incremental backup, only files changed since the last backup are backed up. Therefore, incremental backups require a full backup as a foundation before the incremental method can be used.

8. Click *Next* button to view the backup tasks.




9. Click *Start* button to begin the backup.




You can watch the progress of the backup on the screen.

Rescan Disks

Click the *Rescan Disks* button () any time you want to rescan your computer to discover new disks or remove disks that are no longer attached to your computer.

Restore a Drive

The ability to quickly restore a drive after failure is crucial. With ExBoot, instead of needing to install the operating system and all of your applications on your replacement hard drive, you can rapidly boot your system from the external USB drive and restore the new hard drive to match the original one.

 Note: Because the recovery feature in ExBoot restores the *entire* drive, the menu option and button will not be available until you have booted your computer from the external USB drive.

If you have a hard drive failure, you should do the following:

1. Access your computer's BIOS settings.

Each computer has a different way to access its BIOS settings. Usually, when you start the computer, you will see a message that tells you to press a specific key or keys to access the system settings. Do as directed by the hardware.

2. Change the boot order on your computer to boot from your external USB hard drive.


By default, your computer is probably set to boot from its local hard drive first and possibly a floppy drive or CD-ROM drive next. By changing the BIOS setting to look for the external USB hard drive first, you will be able to boot from it.



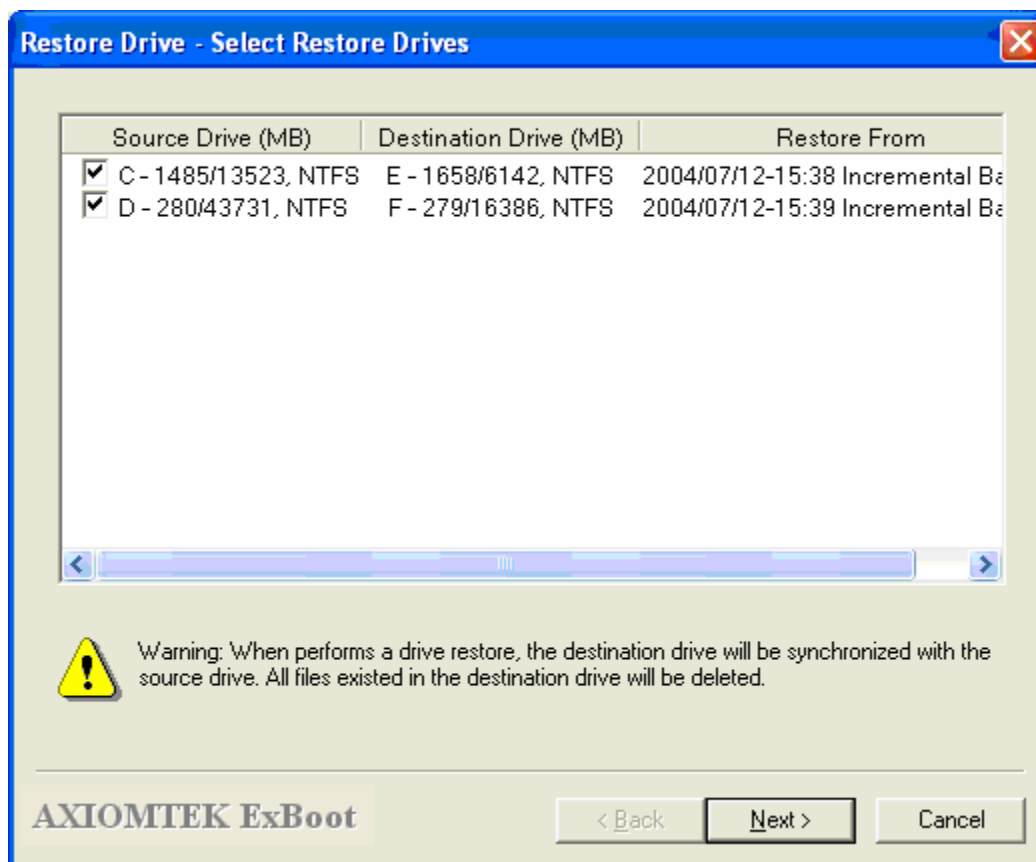
Note: When you boot up from your USB hard drive, you will see the following message:

```
Limited Virtual Memory: Your system has no paging file, or the paging  
file is too small.
```

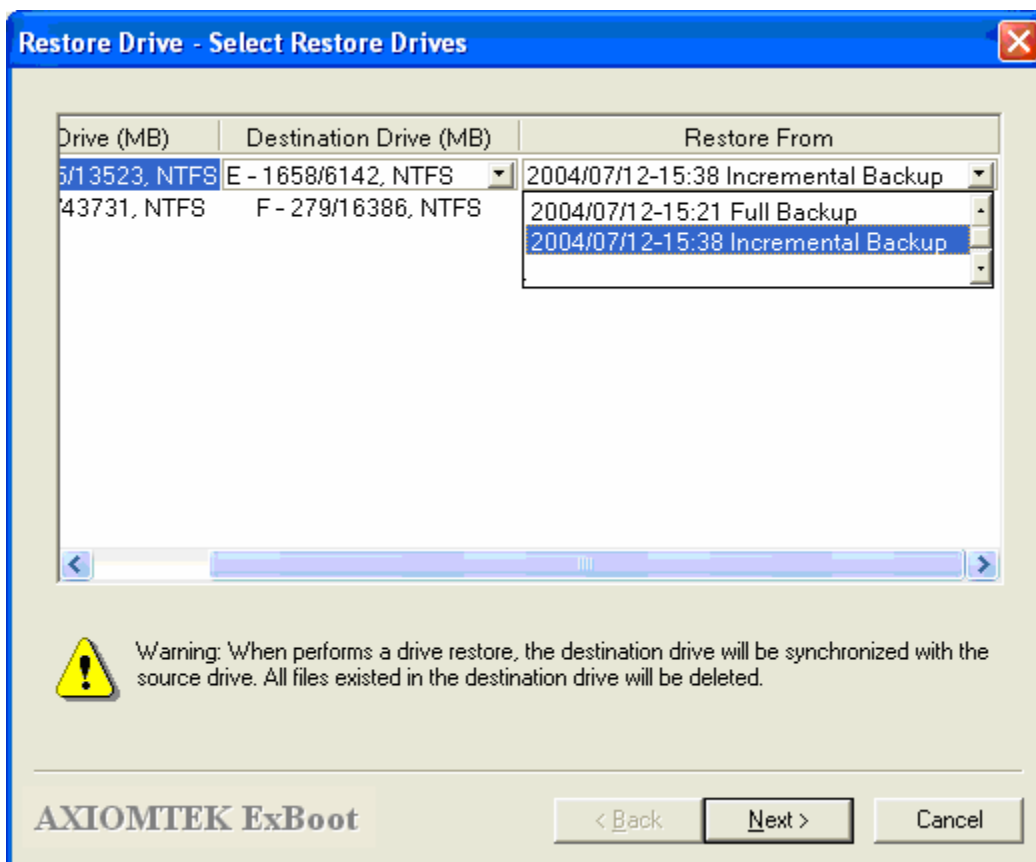
Ignore the message and the system will re-create the pagefile.

3. Load the ExBoot console and click the *Restore Drive* button () to restore the drive.

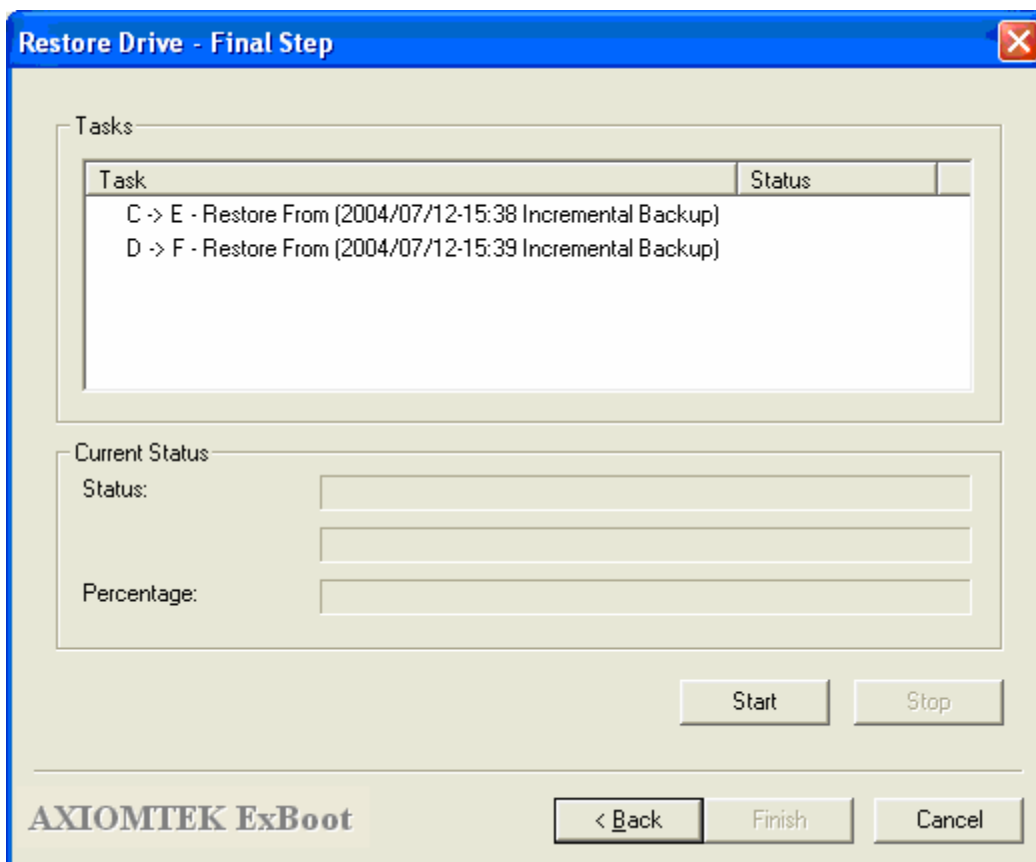
If you have been performing incremental backups, you will have a choice of which backup to restore from. For example, you performed a full backup on Monday and then ran incremental backups each day thereafter. On Friday you discover that a file you received via email on Thursday was infected with a virus which has now spread to other files on your computer. You can restore your entire system drive from Wednesday's backup, to the time before your computer became infected.



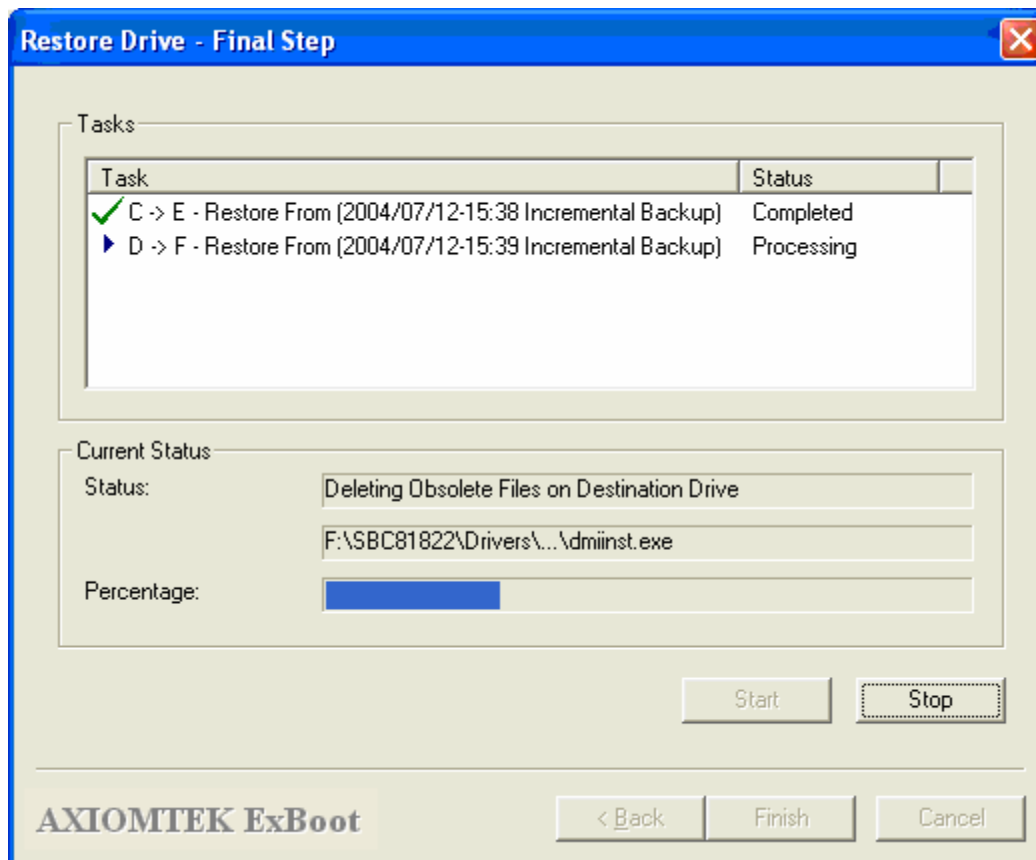
4. Select which version of backup image you want to restore for each partition.



5. Click *Next* button to view the restore tasks.



6. Click *Start* button to begin the restore.



Restore Individual Files and Directories

If you need to restore individual files or directories to your existing hard drive, you can access the external USB drive via Windows Explorer and copy the appropriate data files or directories.

With ExBoot, if you have been performing incremental backups, you have the ability to restore from multiple versions of a file. For example, you have been working on an important proposal all week long. To protect your computer, you performed a full backup on Monday after installing ExBoot, and then ran incremental backups each day thereafter. On Friday you discover that you accidentally deleted some information from the proposal file while you were working on it on Thursday. With ExBoot, you can restore a copy of the file that was backed up on Wednesday and access the missing information.

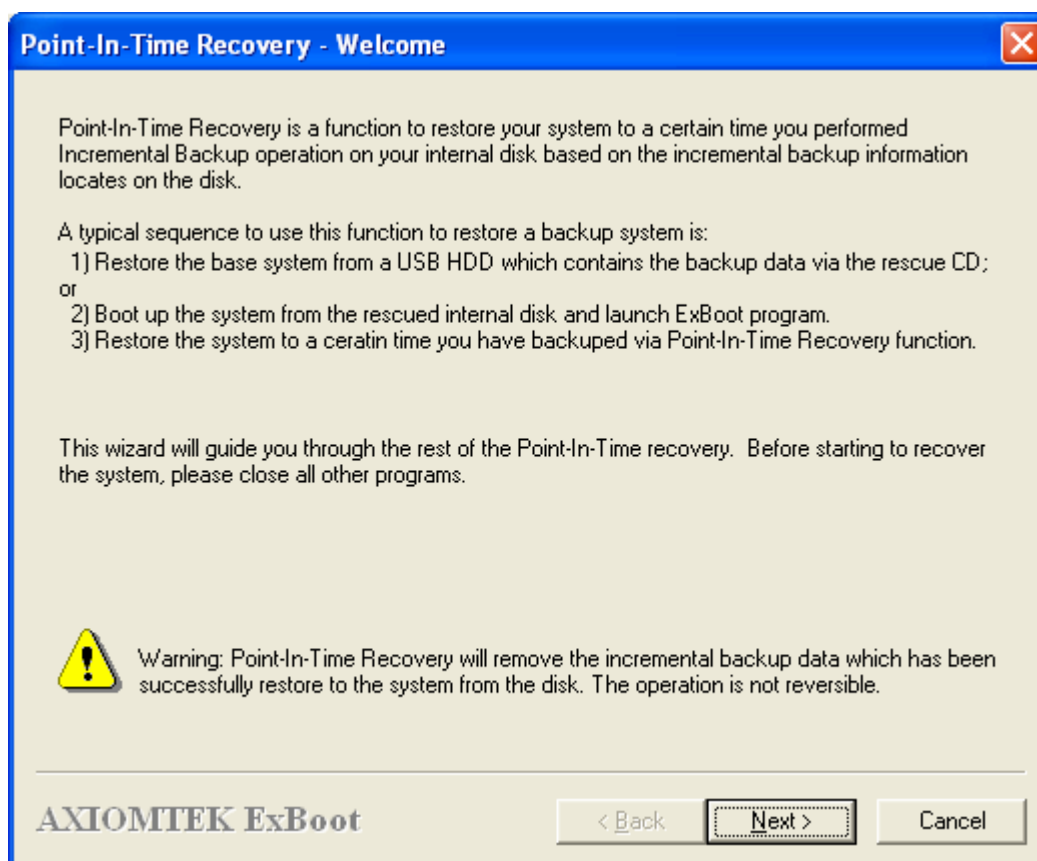
Point-In-Time Recovery

Point-In-Time Recovery is a function to restore your system to a certain time you performed Incremental Backup operation on your internal disk based on the incremental backup information locates on the disk.

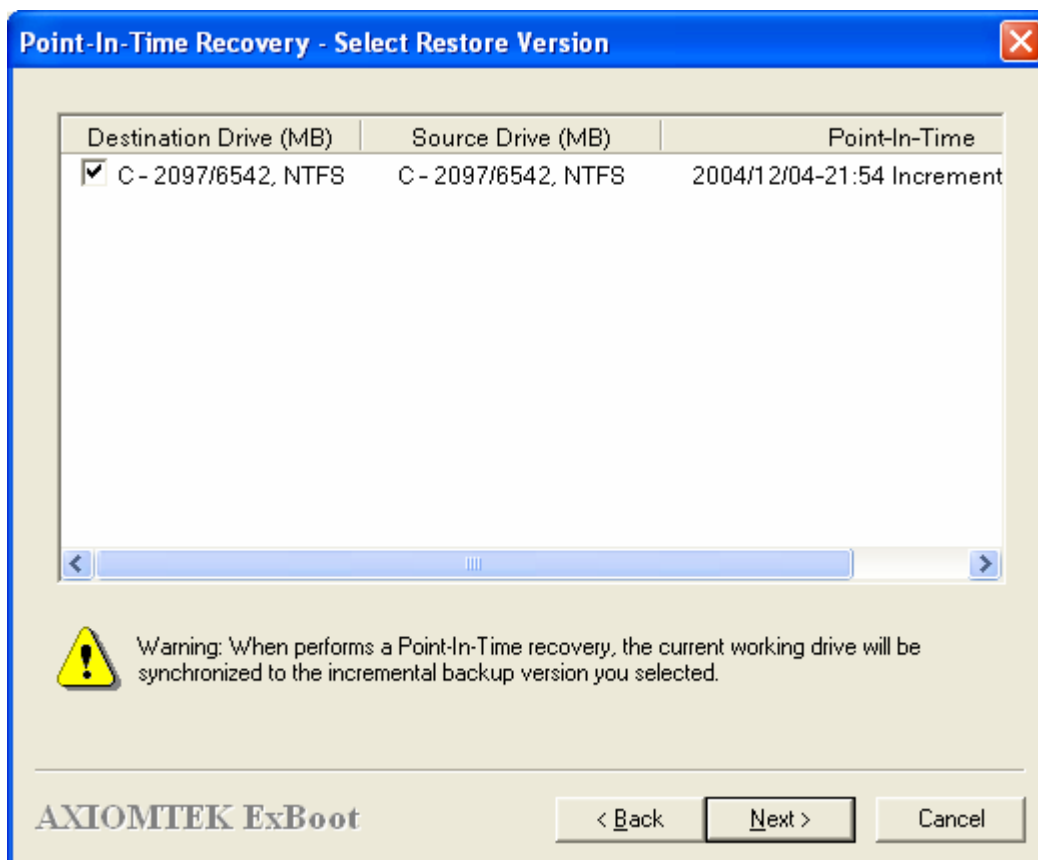
Warning:

Point-In-Time Recovery will remove the incremental backup data which has been successfully restored to the system from the disk.

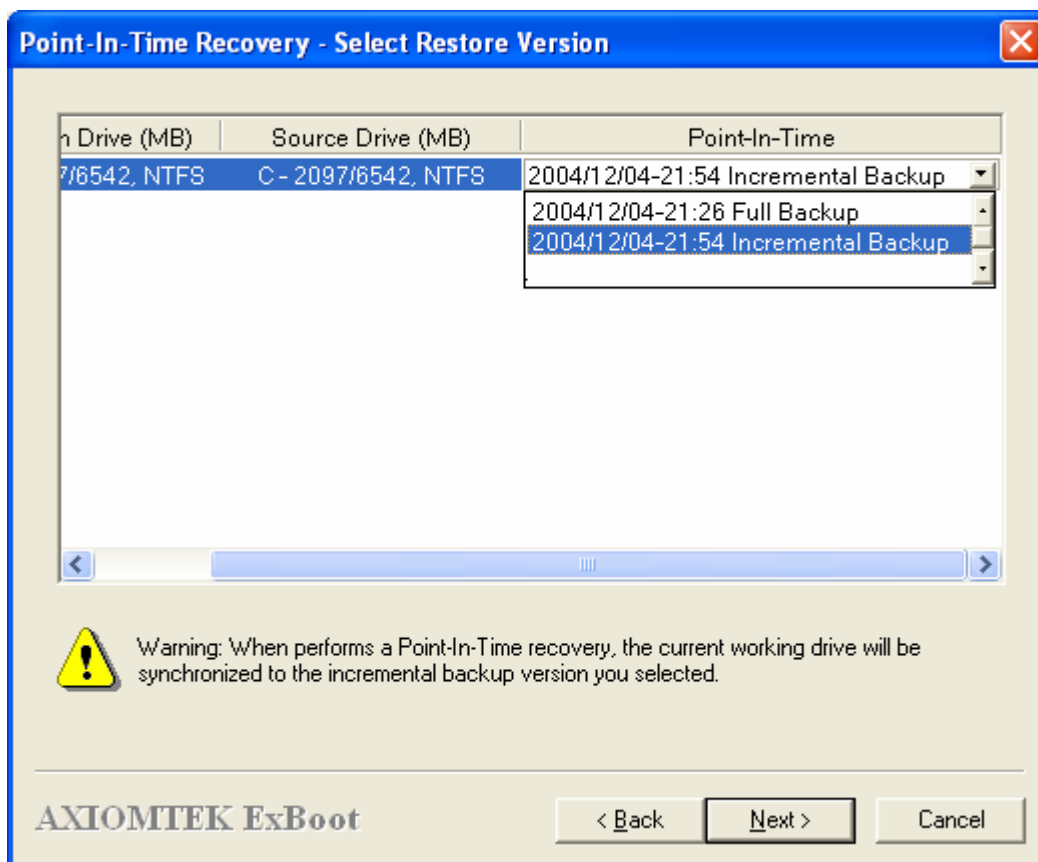
1. Click on *Point-in-time button*, and then click *Next* in the screen below.



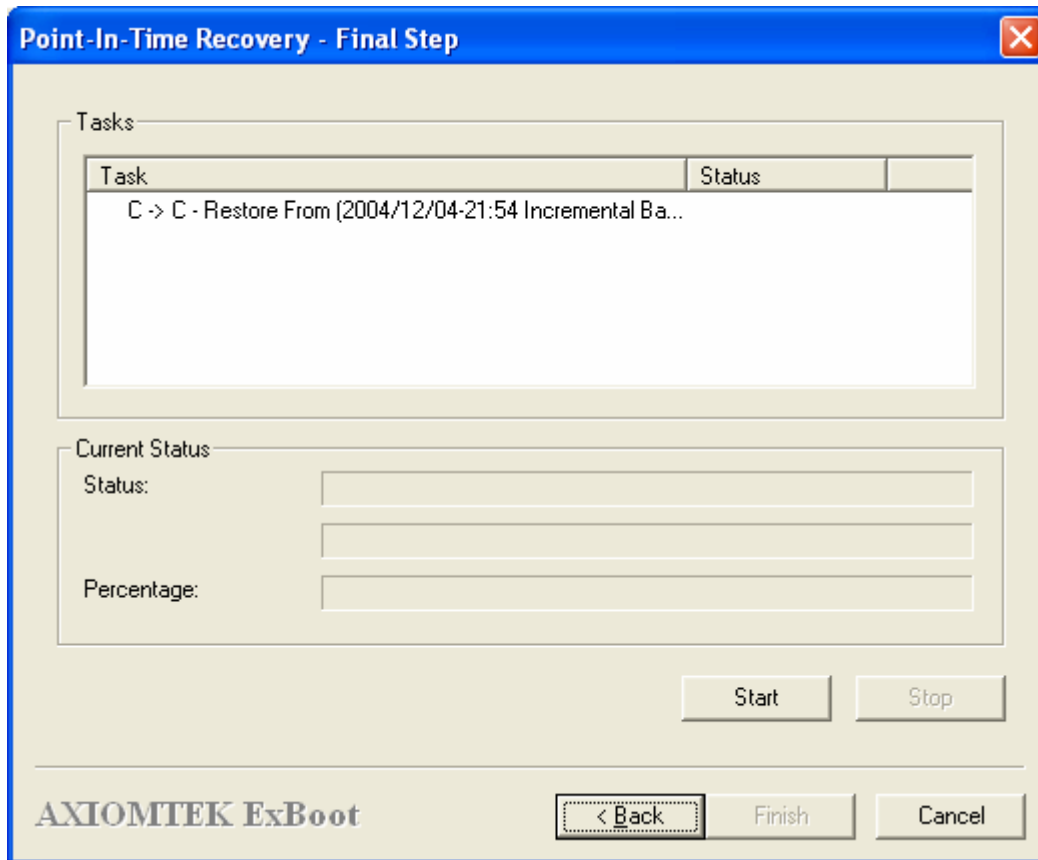
2. Point-In-Time Recovery wizard displays the available tasks in a wizard page as follows.



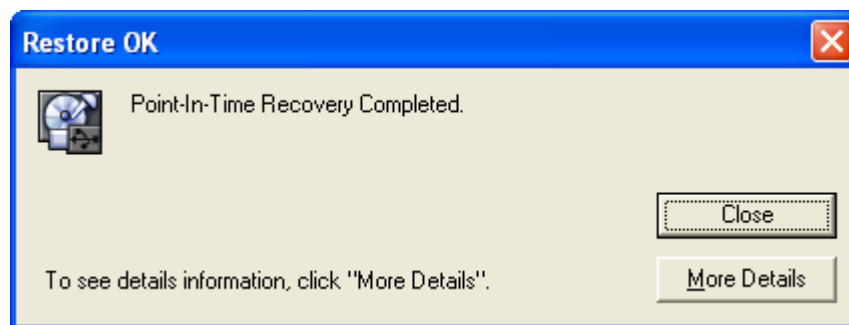
3. Please check a task and select the time you want the system to restore to.



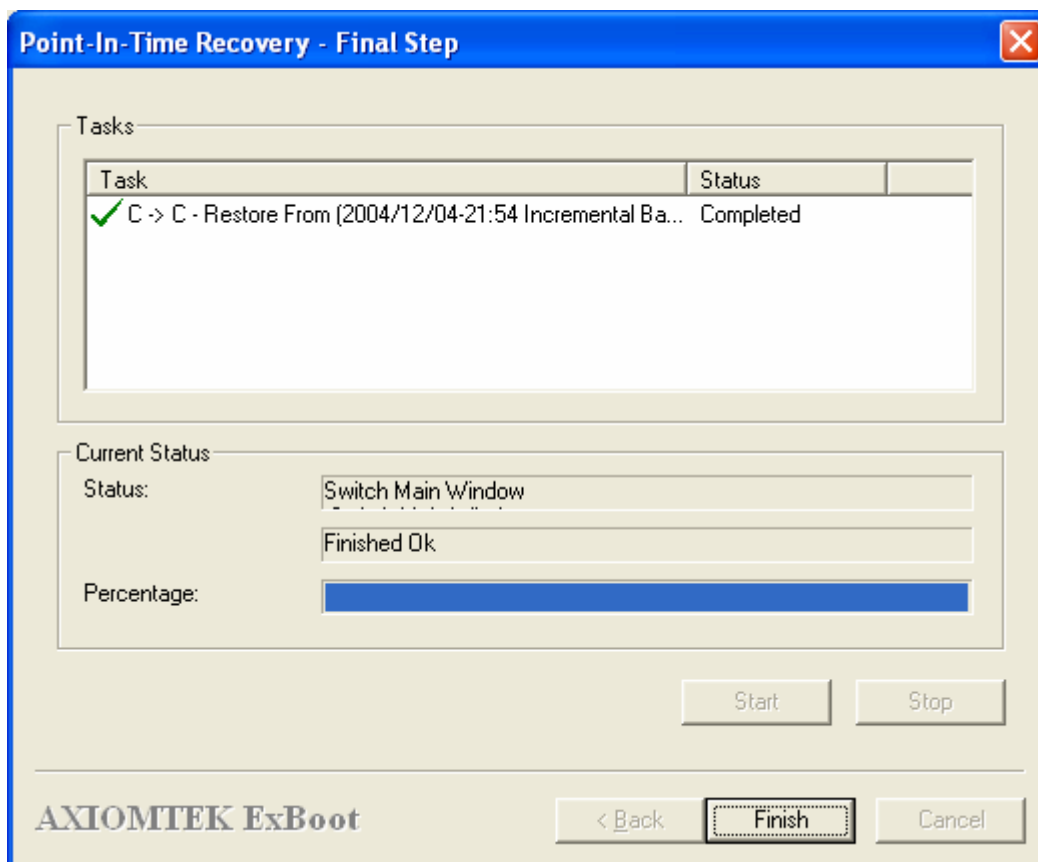
4. Click *Next* button to see the Point-In-Time Recovery tasks you [have](#) just selected.



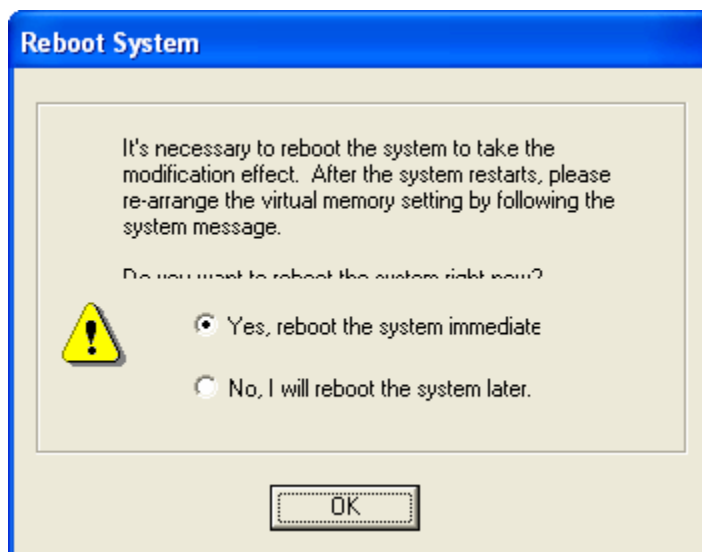
5. Click *Start* button and then the Point-In-Time Recovery wizard will perform the restore job.
6. You can watch the restoring progress on the wizard page. When the complete message pops up, please click *OK* button to continue.



7. Click *Finish* button and then the wizard will be closed.



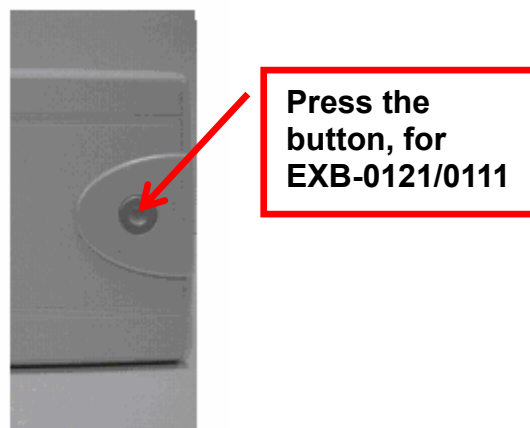
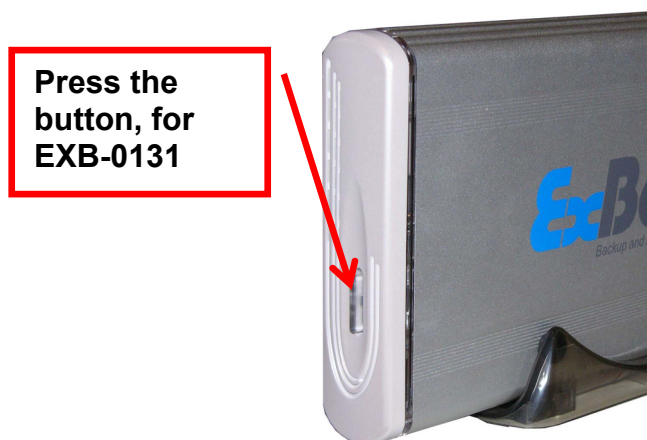
8. Because the Point-In-Time Recovery wizard has modified some system files and registries, ExBoot will ask you to restart the computer. Please click *OK* button to reboot the system.



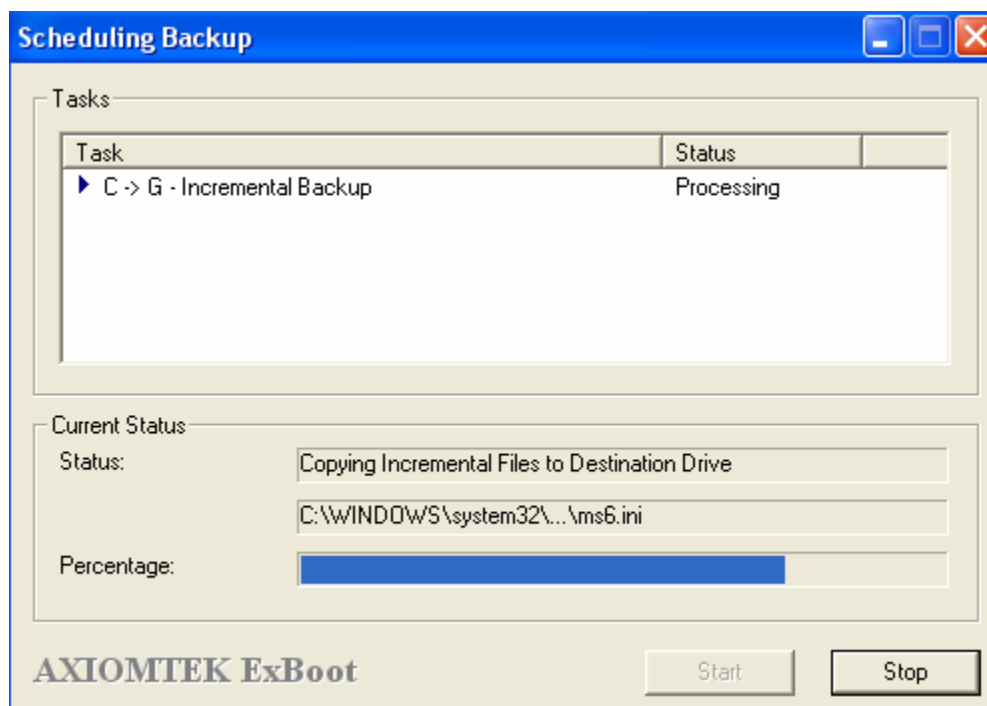
One-Touch Button Backup

After you perform a full backup with the ExBoot, you can simply perform any incremental backup by push the button on the ExBoot hard drive enclosure. Just press the button and your files are backed up on one simple step.

(When processing backup jobs, the button of ExBoot will perform multi-color LED lighting.)



A new screen will appear on your computer. The incremental backup will be performed immediately. Simply wait until it finishes and the backup is done.



Troubleshooting

Problem	Cause/Resolution
<p>You see the following message:</p> <pre>Windows was unable to save all the data for the file \Device\HarddiskVolume6\\$.Mft. The data has been lost. This error may be caused by a failure of your computer hardware or network connection. Please try to save this file elsewhere.</pre>	<p>There are two conditions that can cause this error:</p> <ol style="list-style-type: none">1. You have unplugged the USB hard drive without ejecting the USB connection from the system tray.2. The USB driver failed to respond and Windows removed the USB hard drive from the system. <p>You should not unplug the USB hard drive without properly ejecting the USB connection from the system.</p>