

ExBoot Recovery CD User Guide

Copyright © 2003-2005 AXIOMTEK CO., LTD. All Rights Reserved.

Windows is a registered trademark of Microsoft Corporation.
All other brand and product names are trademarks or registered
trademarks of their respective owners.

For upgrade information, please visit www.exboot.com. 110604

Contents

ExBoot Recovery CD

CD CONTENTS	3
SYSTEM IMAGE RECOVERY HOWTO	4



ExBoot Recovery CD

CD Contents

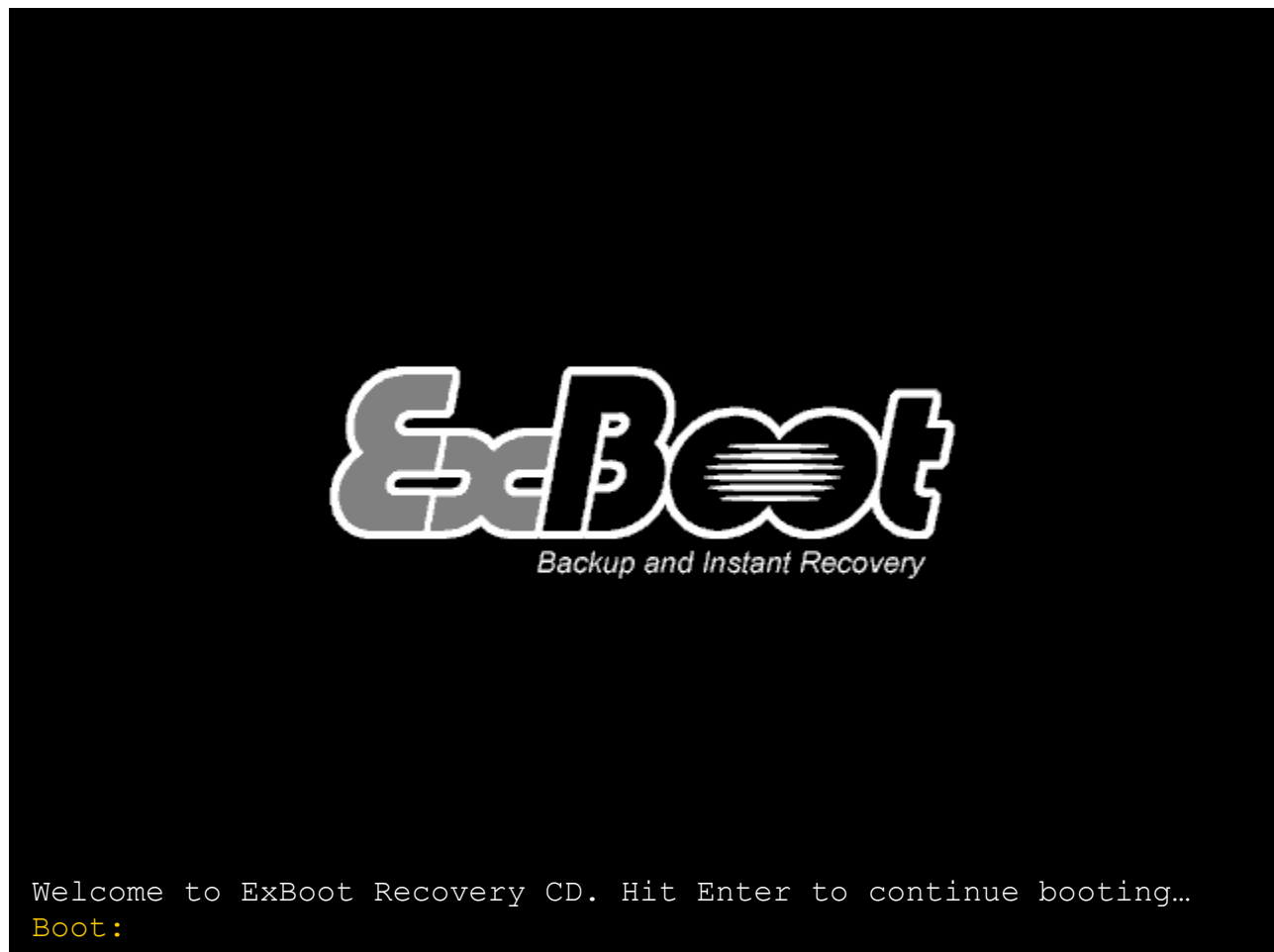
The recovery CD contains:

1. Bootable CD image
2. ExBoot installation files
3. ExBoot system recovery program

System Image Recovery HowTo

A. Boot from Recovery CD

1. Insert ExBoot Recovery CD into the CD-ROM drive.
2. Adjust BIOS setting to select CD-ROM boot.
3. Save BIOS setting and continue to boot from ExBoot Recovery CD. The following picture will display on the screen.



4. Press Enter key or wait 3 seconds to continue booting process. It takes about 2 minutes to complete the booting process.
5. After complete the booting process, the ExBoot Recovery CD main window shows on the screen.



B. Restore the System Partition

1. In ExBoot Recovery CD window, three items are included:

- Image Recovery

Display the *Image Recovery* window and let user restore the system image from a selected USB drive to a selected IDE drive.

- Reboot

Reboot the system immediately.

- Shutdown

Halt the system immediately.

Use ↑ and ↓ keys to change the selected menu item. Then press Enter key to activate a menu item.

2. Choose item 1, *Image Recovery*, to start the recovery process. The *Image Recovery* window displays. There are two menu items in this window:

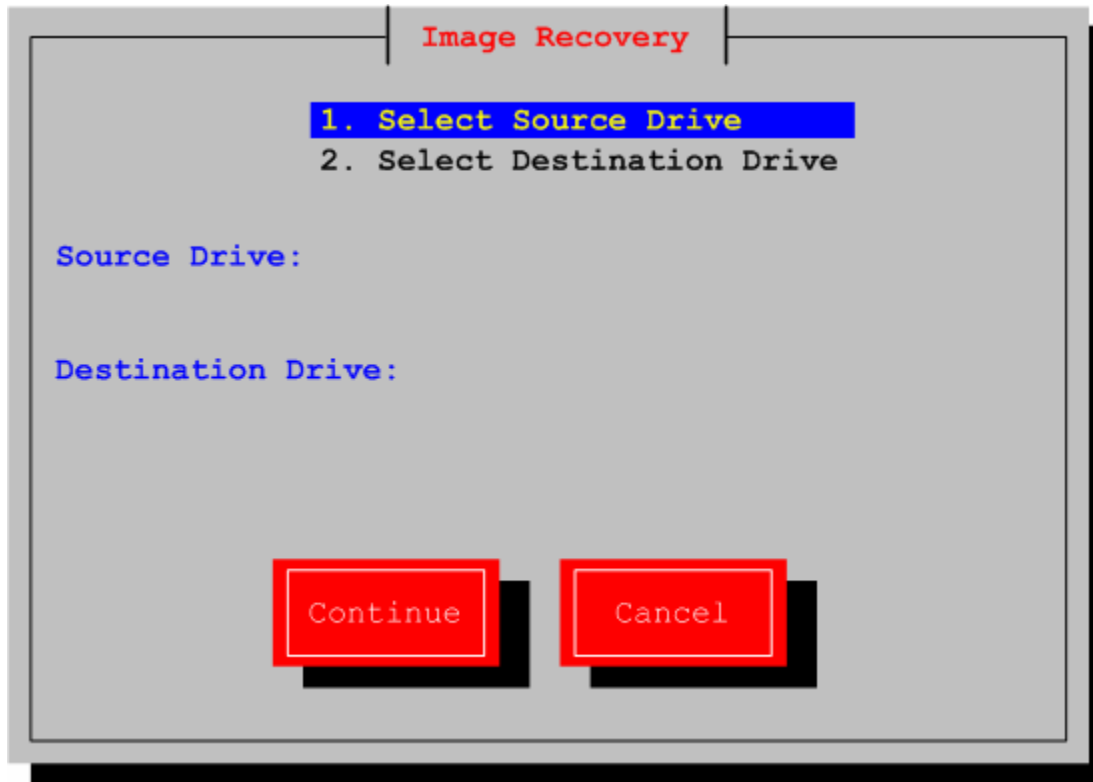
- Select Source Drive

Display the *Select Source Drive* dialog and let user select a source drive which must be a USB drive and contains a system partition.

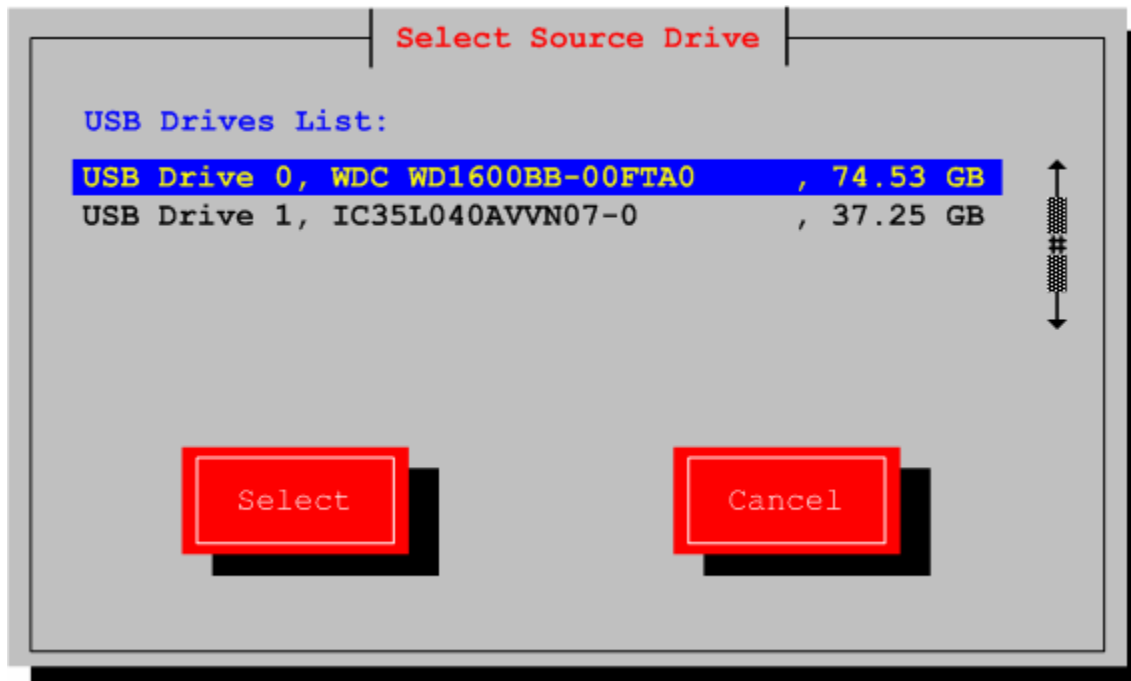
- Select Destination Drive

Display the *Select Destination Drive* dialog and let user select a destination drive which must be an IDE drive.

Use ↑ and ↓ keys to change the selected menu item. Press Enter key to active a menu item.



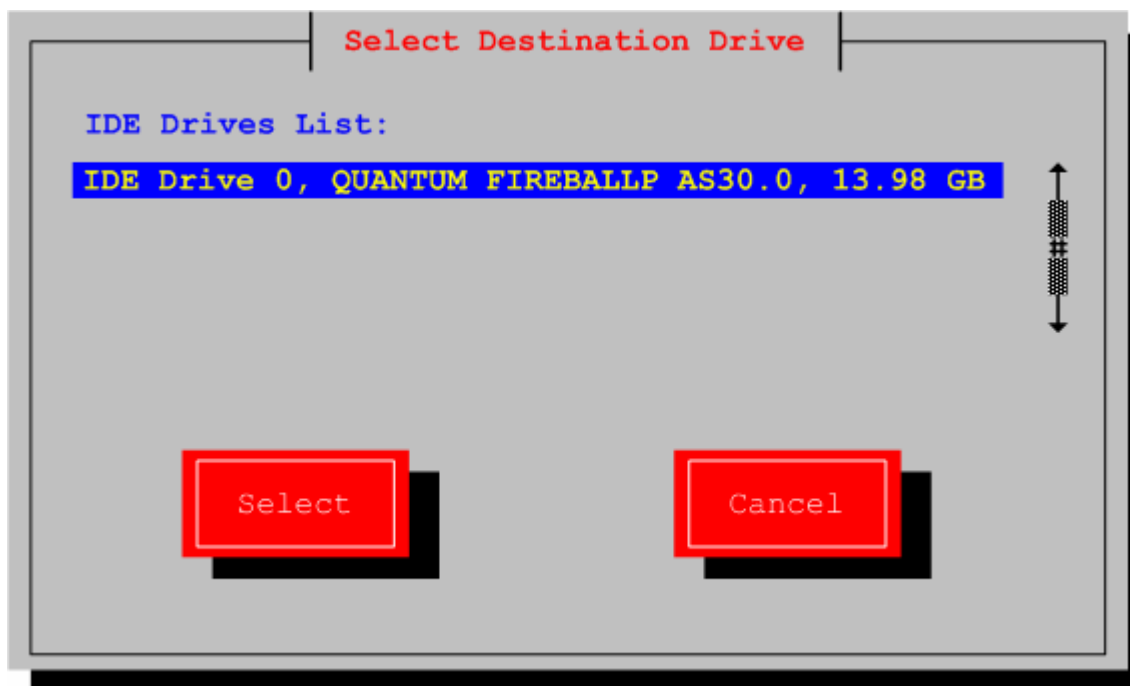
3. Choose item 1, *Select Source Drive*, to select a source drive. The *Select Source Drive* dialog shows as follows:



The dialog lists all USB drives in the USB drive list. Use ↑ and ↓ keys to

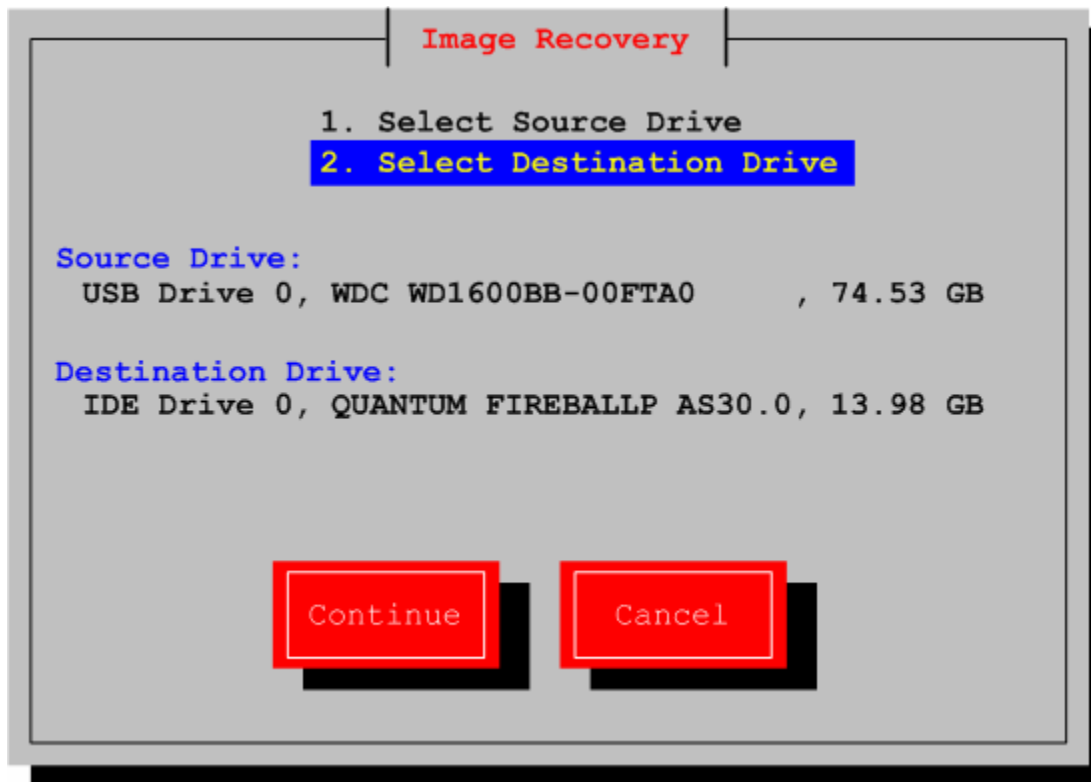
select a USB drive which contains the system partition you want to restore. Then press Select button in the dialog to finish the selection and back to *Image Recovery* window.

4. In *Image Recovery* window, choose item 2, *Select Destination Drive*, to select a destination drive. The *Select Destination Drive* dialog shows as follows:

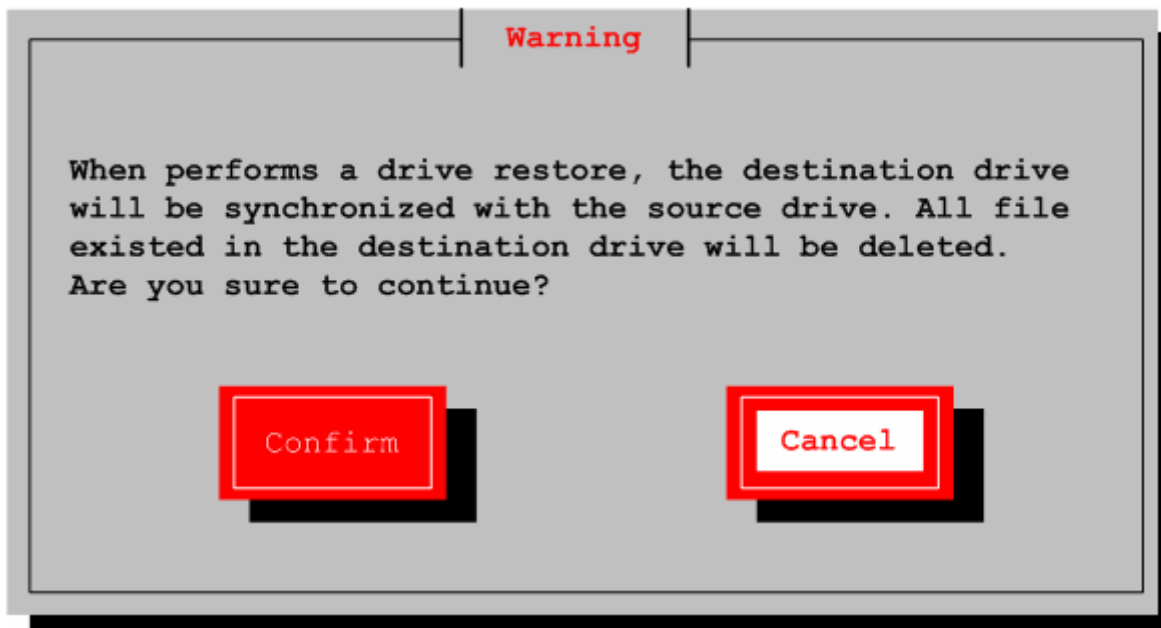


The dialog lists all IDE drives in the IDE drive list. Use ↑ and ↓ keys to select an IDE drive which you want to restore the system partition. Then press Select button in the dialog to finish the selection and go back to *Image Recovery* window.

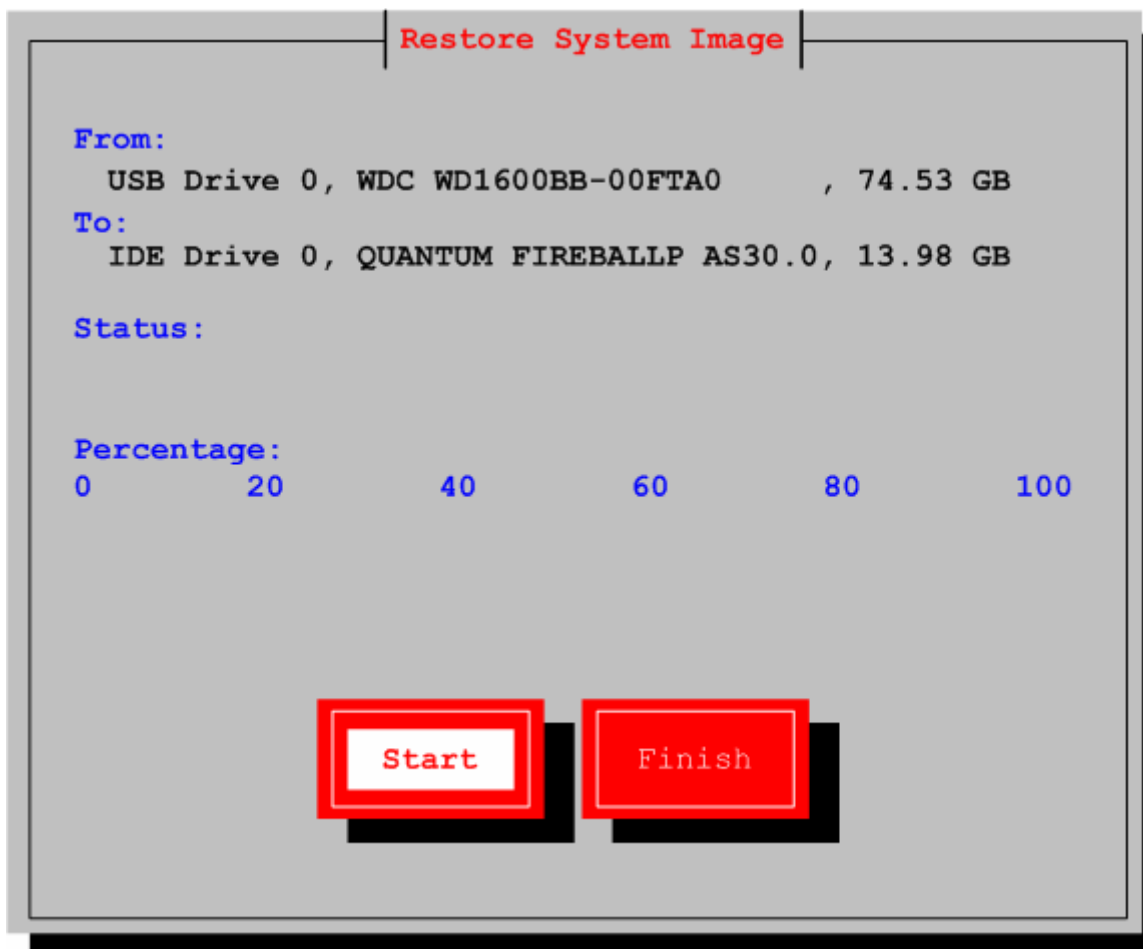
5. Now you have selected source and destination drives as the following picture.



Use Tab key to change input focus to Continue button, then push the space bar or Enter key to continue. A warning message pops up as follows:



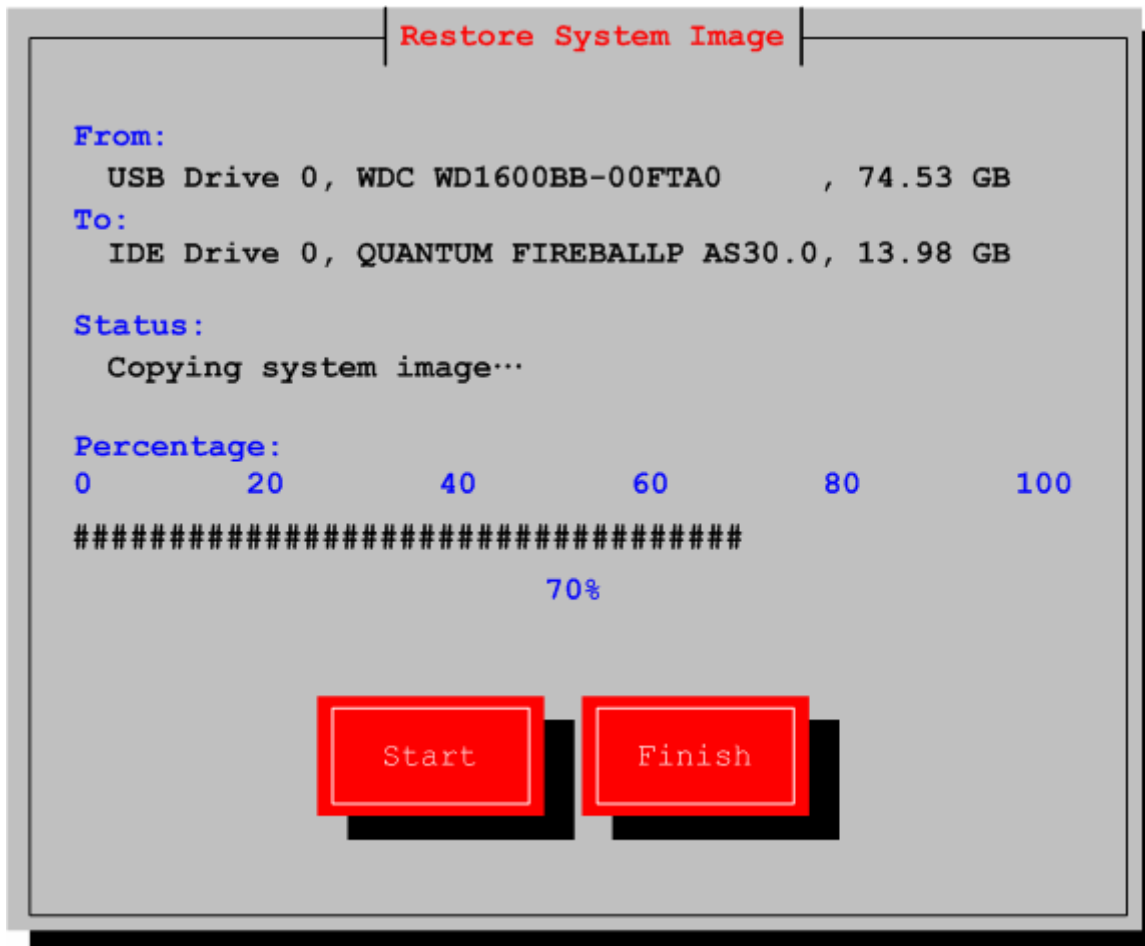
Press Cancel button if you don't want to restore the system partition, or press Confirm button to display *Restore System Image* dialog.



The From field shows the source drive information and the To field publishes the destination drive information. Use → and ← keys to set focus on Start or Finish button.

You can press Finish button to cancel the operation and back to the main window if you don't want to continue the recovery procedure.

6. Press Start button to start system image recovery. You can see the status in the same dialog.



The Status field displays the task currently operated. A progress bar and a percentage indicator show the current rate of progress.

7. Once the system recovery is complete, a message box pops up to tell you the successful information. Please press Return button to go back to the main window.

