



ExBoot Quick Installation Guide

This guide provides the procedure of how to quickly install ExBoot hardware and software. Before getting started, please make sure you have the following components. If there is any item missing, please contact your retailer or distributor for assistance.

EXB-0131

1. ExBoot CD-ROM x 1, containing
 - a. ExBoot software Package File
 - b. Recovery Bootable Software
 - c. Recovery Bootable Software Manual File
 - d. User's Manual File
 - e. Quick Installation Guide File
2. ExBoot Quick Installation Guide
3. ExBoot Hard Drive Enclosure x 1
4. 3.5" Hard Disk x 1 (optional)
5. USB Cable x 1
6. Power Supply Cord x 1
7. Power Adaptor x 1
8. Screws
9. Stand x 1

Hardware Installation

1. Remove the ExBoot hard drive enclosure from the package, and remove the screws from the case.



2. Dismantle the enclosure and carefully store the screws and the related accessories in a safe place.

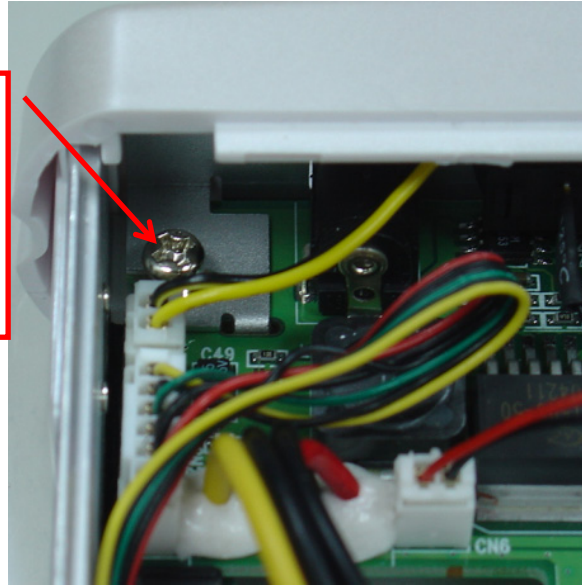


3. Connect the hard disk with 2 connectors of the hard drive enclosure. Attach the hard drive firmly to the drive tray with the screws provided. Please note that the positions of the screws may vary, depending on the hard drive manufacturer.



4. Please adjust the positions of the screw to firmly attach the hard drive. If this is the case, please adjust the position of the inner board and hard drive by loosening the screws at the top left corner of the enclosure. NB the IDE hard drive should be set on Master mode (refer the HDD user's manual).

Loosen the screw to adjust the positions of the inner board and screws.



5. Insert the hard disk part into the enclosure.



6. Install the front panel to the drive tray.



7. Make sure that the screws have been firmly attached.



8. Place the assembled ExBoot enclosure onto the base supplied and connect the power supply cord to complete the hardware installation.

9. Power on your PC or laptop and EXB-0131, continue to start ExBoot software installation.



- Do not connect EXB-0131 to any USB Hub.
- Please always make sure you use the same USB slot as you did the first

time you had connected ExBoot to your PC or laptop.

EXB-0121.

1. One ExBoot Backup and Instant Recovery Software CD-ROM , containing
 - a. ExBoot Software Package File
 - b. Recovery Bootable Software
 - c. User's Manual File
 - d. Quick Installation Guide File
 - e. Recovery Bootable Software Guide File
2. ExBoot Quick Installation Guide X 1
3. ExBoot Hard Drive Enclosure x 1
4. 2.5-inch IDE Hard Disk x 1 (optional)
5. “Y” USB cable x 1
6. USB to DC-inlet Cable x 1
7. Protection Bag x 1
8. Screw Driver x 1

Hardware Installation

Follow the below steps for hardware installation.

2. Remove the ExBoot enclosure from the box and remove the screws from front case.



3. Dismantle the enclosure and make sure you carefully store the screws and the related accessories in a safe place.

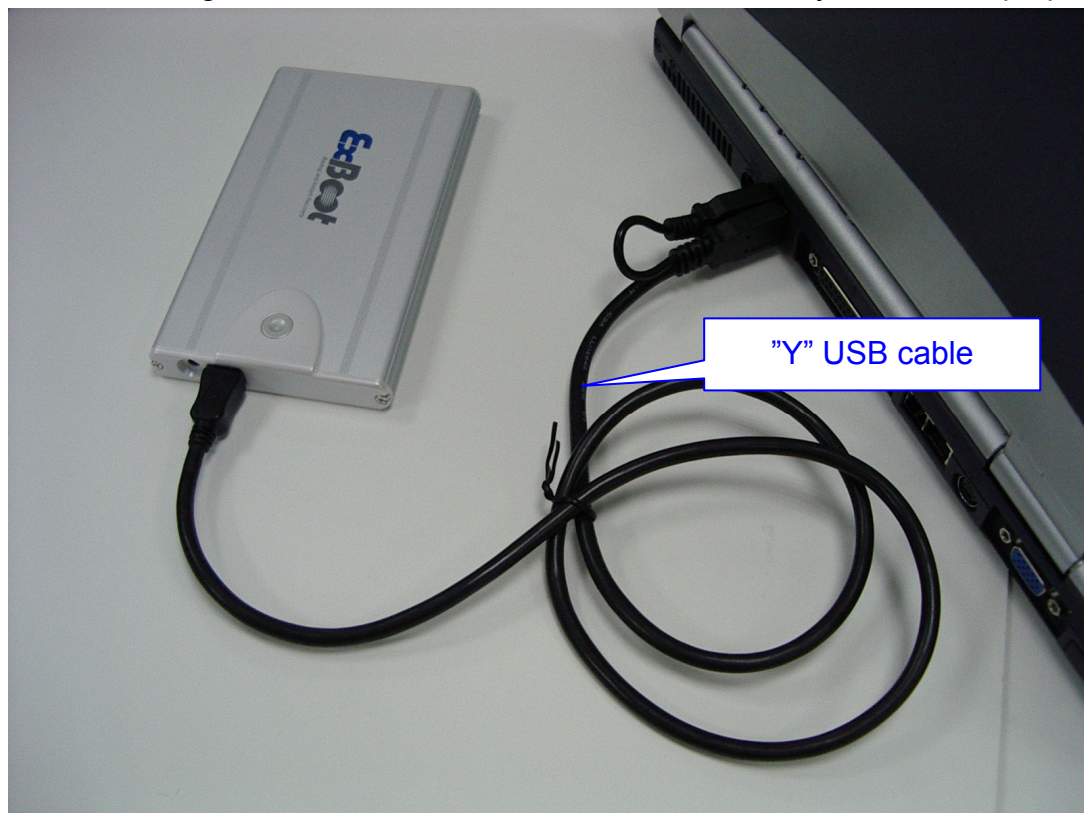


4. Connect the hard drive to the connector on the hard drive enclosure firmly. Insert the hard drive. Attach screws to the hard drive enclosure.

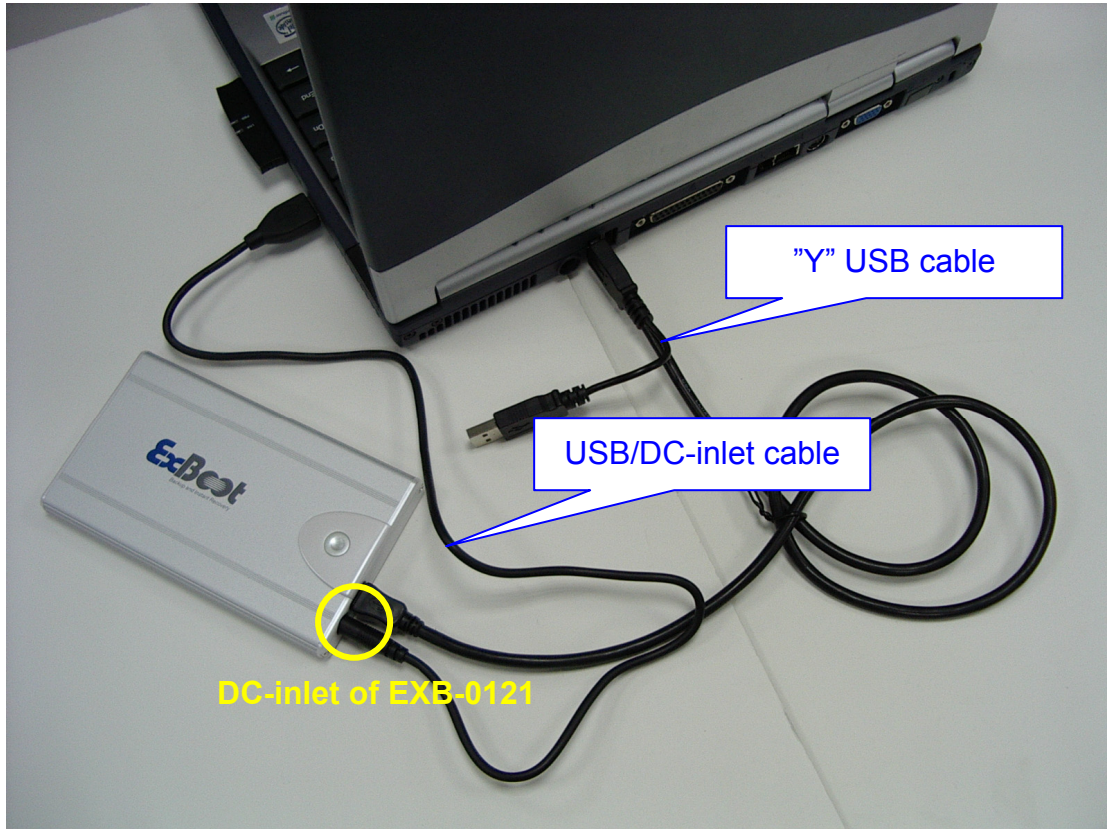


5. There are 2 USB Cable Connections as follow:

- Using "Y" USB cable to connect EXB-0121 with your PC or laptop.



- When the 2 USB slots of your PC or laptop is too far apart to connect, please use the enclosed USB/DC-inlet cable. (see following connection instructions). (NB Do NOT USE USB HUBS)



6. Complete the installation and power on your PC or laptop, the ExBoot hardware will be automatically detected.
- Do not connect EXB-0121 to any USB Hub.
 - Please always make sure you use the same USB slot as you did the first time you had connected ExBoot to your PC or laptop.

EXB-0111

1. ExBoot CD-ROM x 1, containing:
 - a. ExBoot software Package File
 - b. Recovery Bootable Software
 - c. User's Manual File
 - d. Quick Installation Guide File
 - e. Recovery Bootable Software Guide File
2. ExBoot Quick Installation Guide X 1
3. ExBoot Hard Disk Case x 1
4. 1.8-inch Hard Disk x 1 (optional)
5. USB Cable x 1
6. Protection Bag x 1
7. Screw Driver x 1

Hardware Installation

1. Remove the ExBoot hard drive enclosure from the package, and undo the screws. Dismantle the components, and carefully store the screws and the related accessories.



2. Connect the hard disk with the connector in the disk case, and push the hard disk inward. Firmly screw up the hard disk case.
3. Connect one end of the USB cable to the hard disk case, and the other end to the USB slot on your PC or laptop. The hardware installation is thus complete.

4. Power on your PC or laptop, continue to start ExBoot software installation.

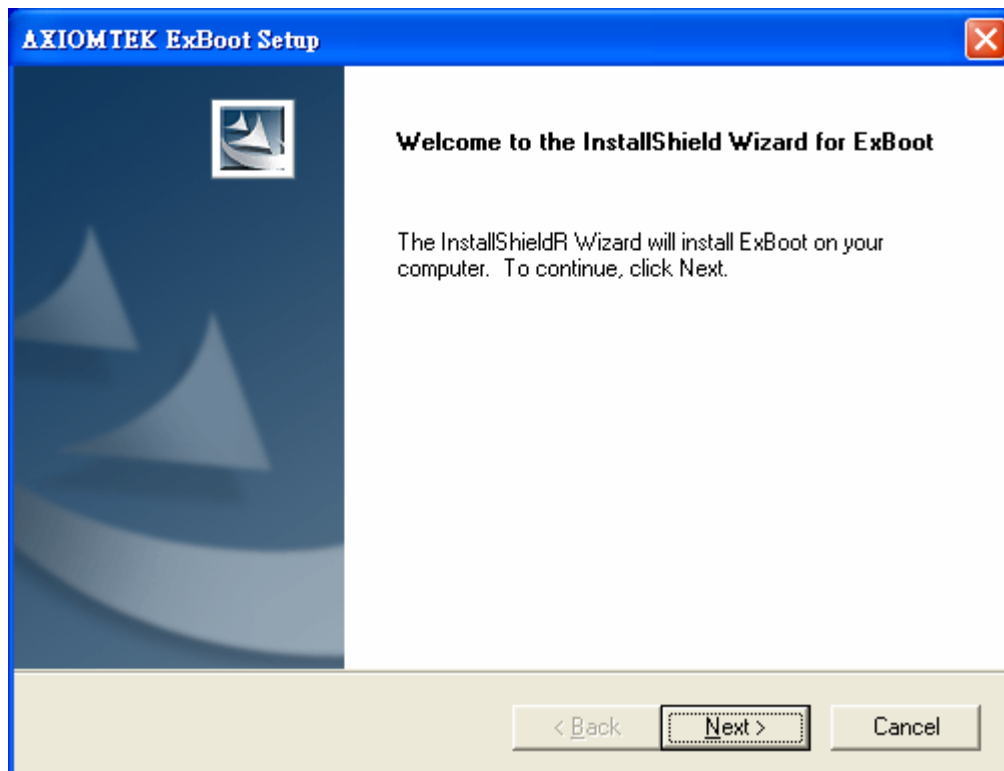


- Do not connect EXB-0111 to any USB Hub.
- Please always make sure you use the same USB slot as you did the first time you had connected ExBoot to your PC or laptop.

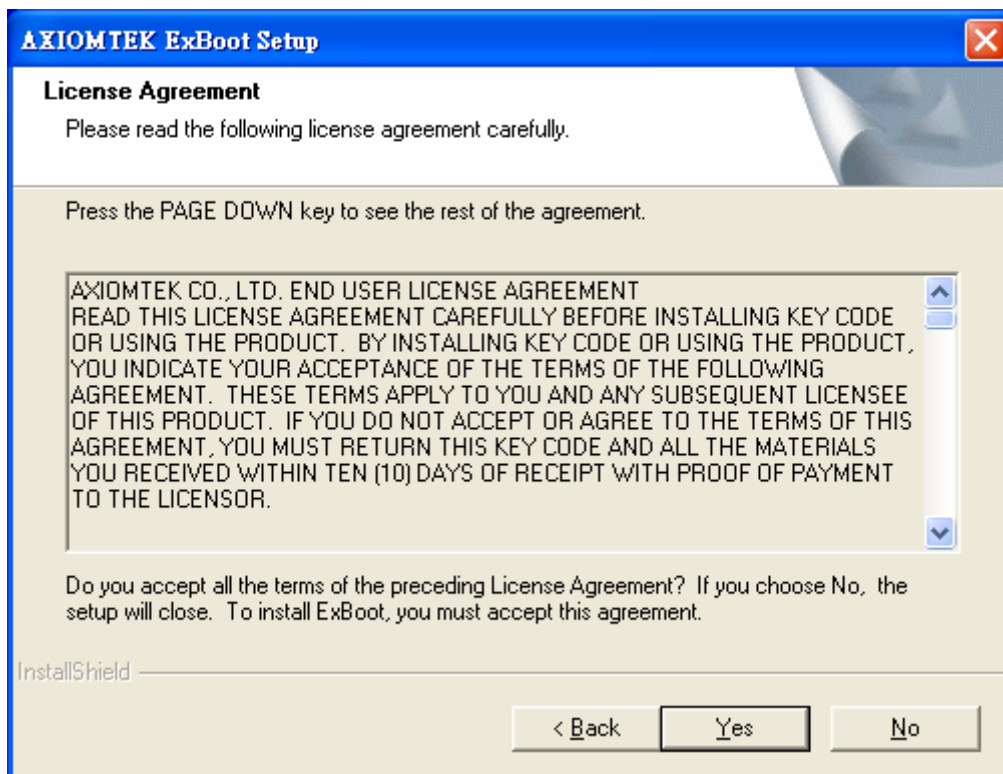
B. Software Installation

Insert the CD-ROM in the drive of your computer. An auto-run program will be executed immediately. Please follow the procedures below to complete the software installation.

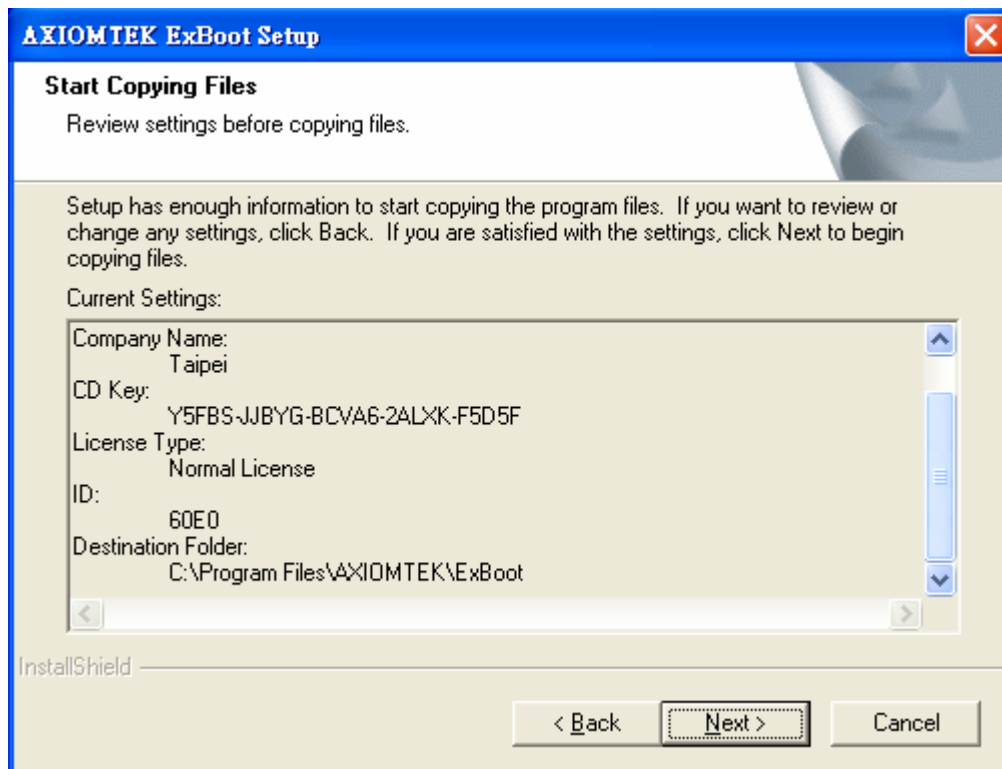
1. Click on **Next** in the following screen.



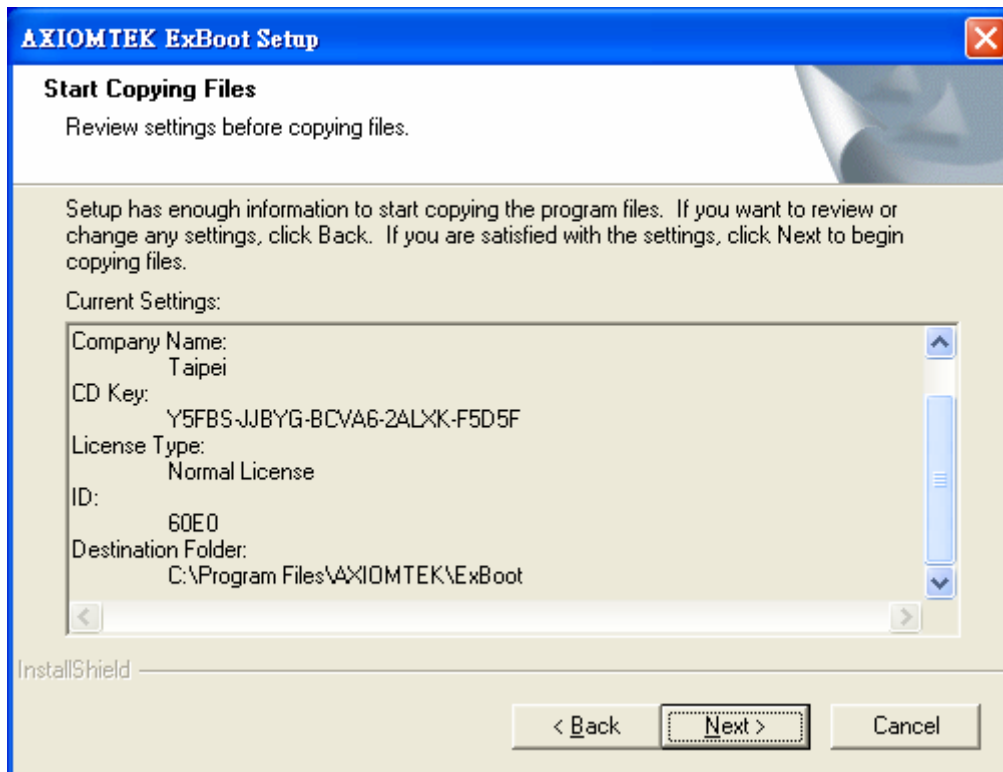
2. You must accept all the terms of the License Agreement for ExBoot by clicking on **Yes**.



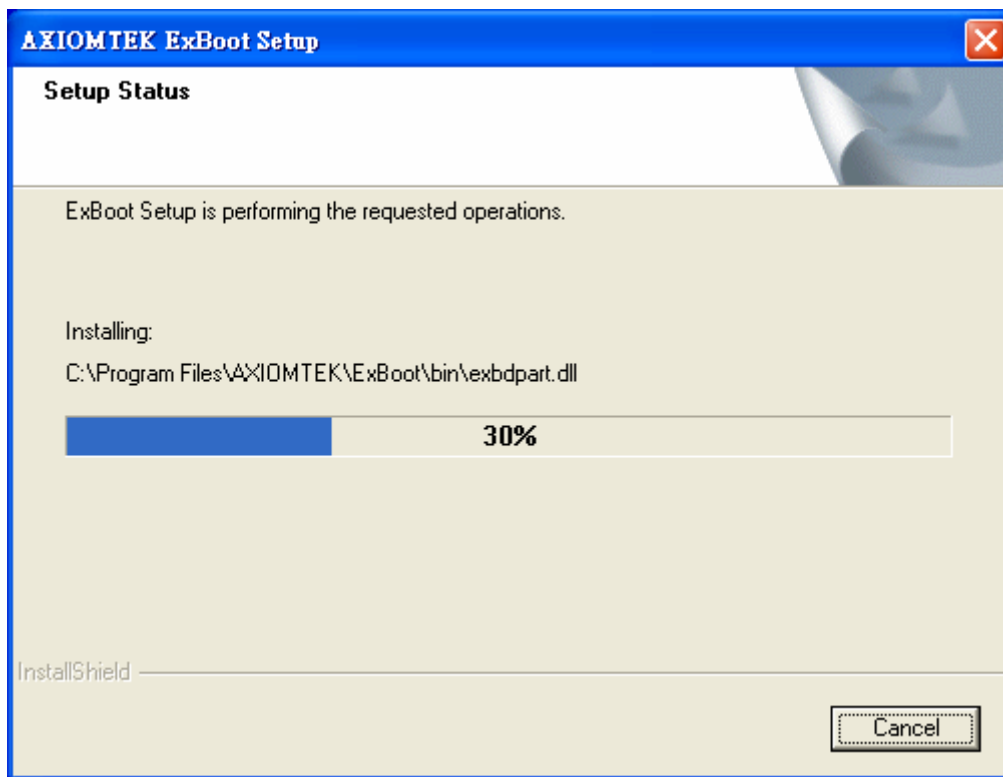
3. ExBoot will lead you to the next step. You may use the default value to install ExBoot in the specific destination folder. Just click on **Next** to continue. Or you may click **Browse** if you wish to install ExBoot in the different folder.



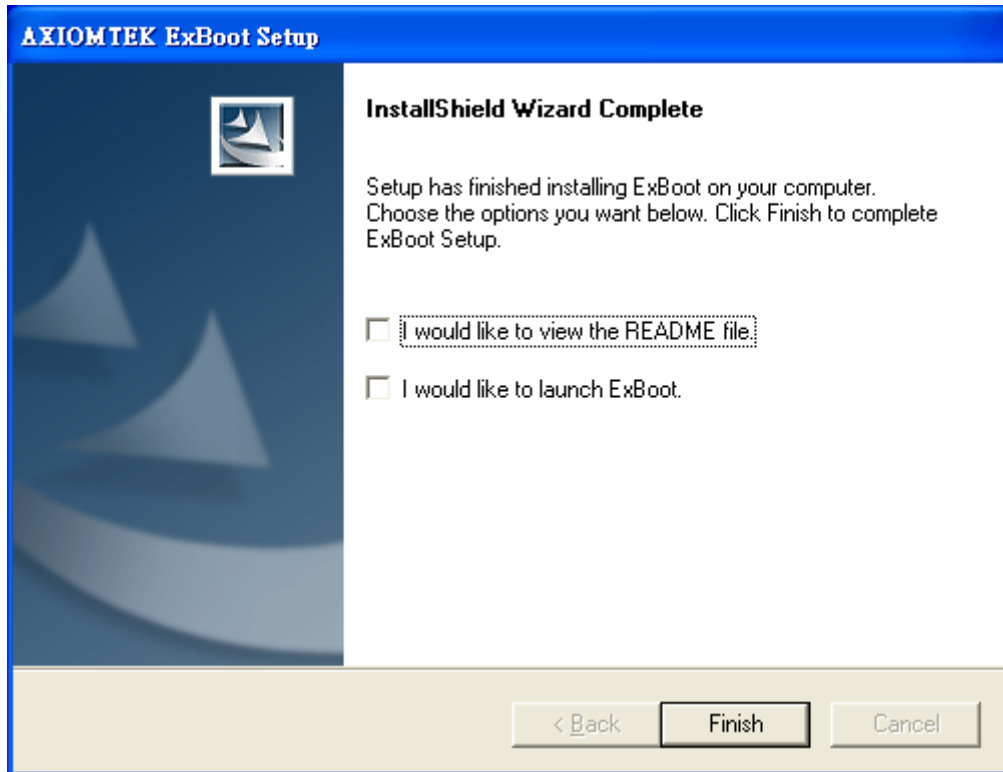
4. You may view the current settings on the next screen. Click on **Next** if you want to continue the installation. Or you click **Back** to change the settings for each item.



5. ExBoot will start copying files into your computer. You may view the status in the following screen.

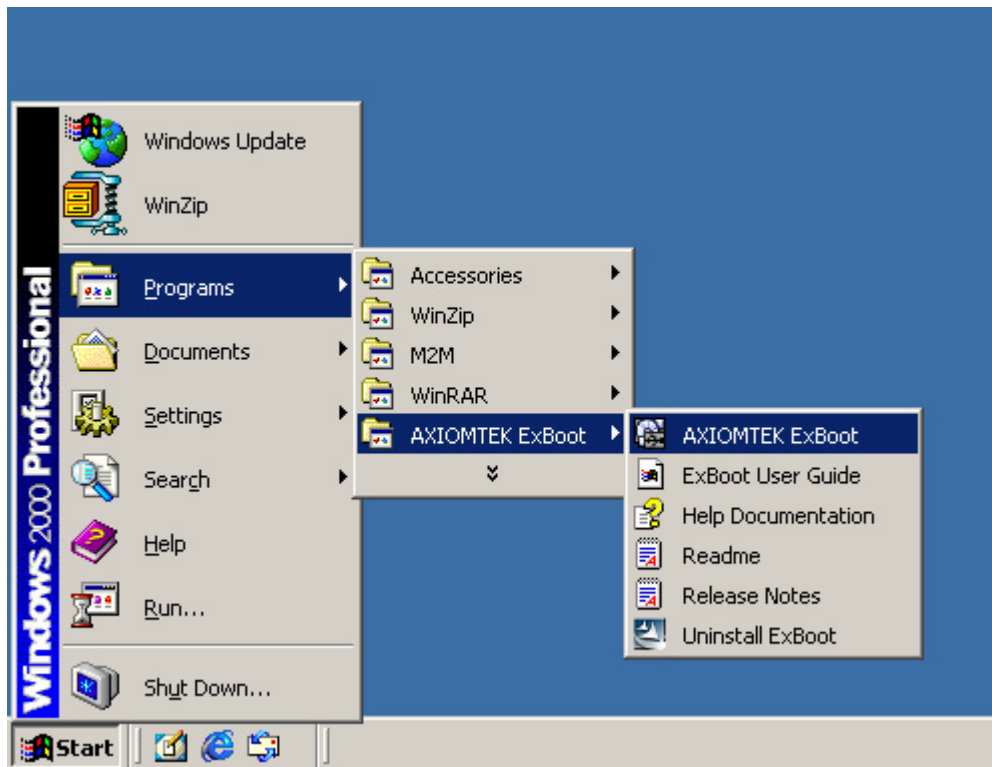


6. When the installation is complete, you may check **'I would like to view the README file'** and **'I would like to launch ExBoot'**. Click **Finish** to complete the installation procedure.



7. You may run ExBoot from two locations on your computer:

A. **Start→Programs→AXIOMTEK ExBoot→AXIOMTEK ExBoot** ◦



B. **My Computer→C Drive→Program Files→AXIOMTEK→ExBoot→BIN→ExBoot.exe**

